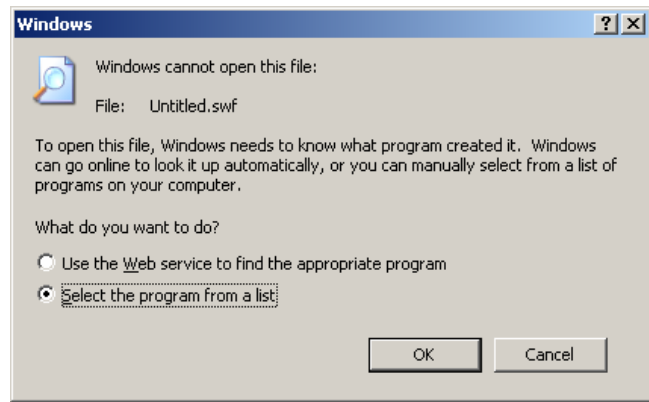

Associating Flash with Internet Explorer

If when attempting to run an online training file (Flash with an extension of .swf) you receive an error, "Windows cannot open this file", it indicates that Windows does not know which application to run to view the tutorial.

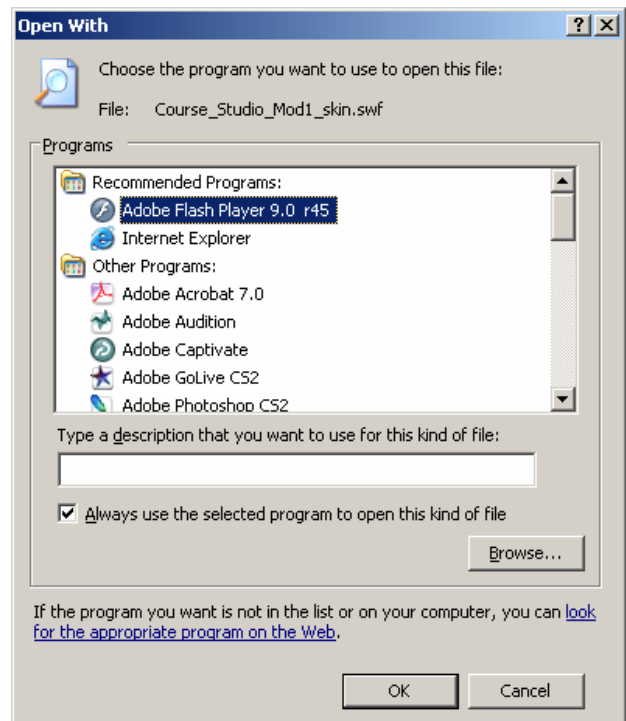
Follow these instructions to fix:

1. Verify you have the latest version of Flash Player installed. (Go to http://www.adobe.com/shockwave/download/triggerpages_mmcom/flash.html to download and install the latest Flash player.)

2. At the error screen, click the button for "Select the program from a list", and then click **OK**.



3. Select either **Adobe Flash Player** or **Internet Explorer**, and then click **OK**.



4. Attempt to run the online tutorial again.