

INSTRUCTIONAL ANNUAL PROGRAM PLANNING WORKSHEET FOR 2017-2018

CURRENT YEAR: 2017-2018

PROGRAM: PSYCHIATRIC TECHNICIAN PROGRAM

CLUSTER: MATH, NURSING, BIOLOGICAL AND PHYSICAL SCIENCES, KINESIOLOGY/HEALTH SCIENCES & ATHLETICS

LAST YEAR CPPR COMPLETED: 2015-2016

NEXT SCHEDULED CPPR: 2019-2020

CURRENT DATE: 2/25/2017

This APPW encompasses the following degrees and/or certificates:

Associate Degree-Psychiatric Technician

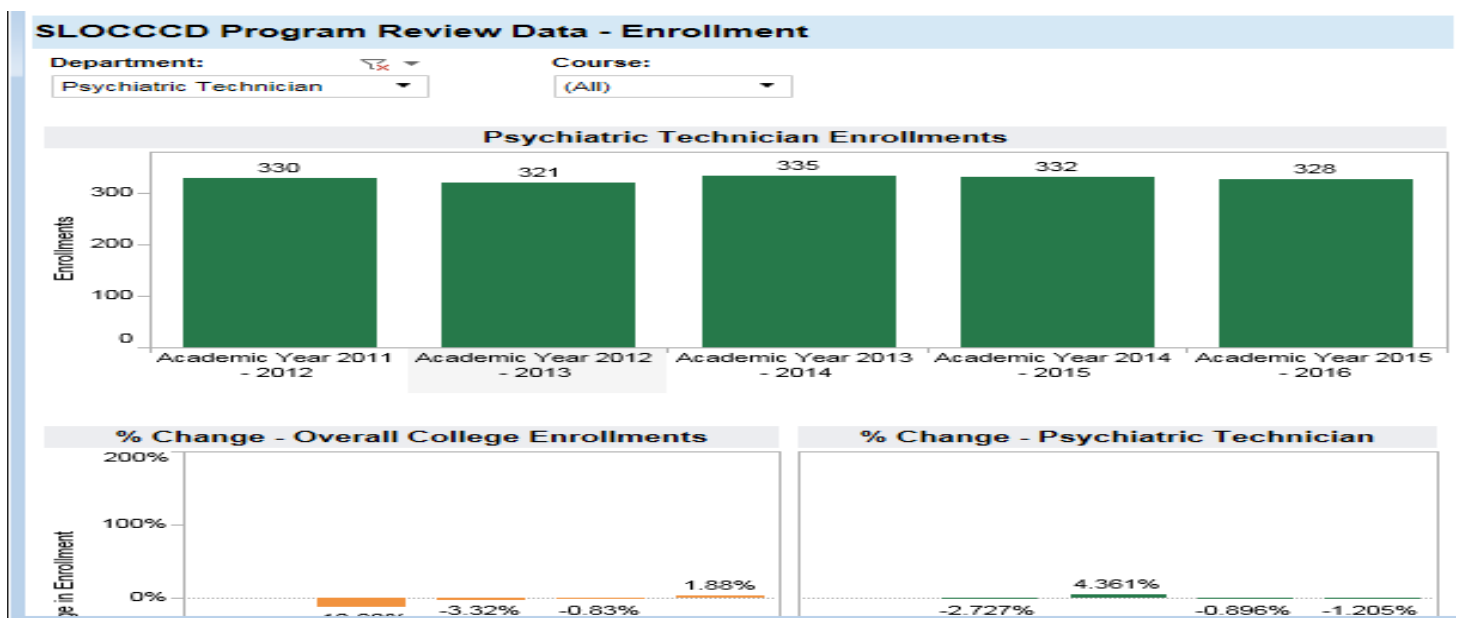
Certificate-Psychiatric Technician

GENERAL PROGRAM UPDATE

One faculty member retired in October, 2016 and a new faculty member was hired in September to allow for orientation. The program secretary left in June, 2016 to enter the Psychiatric Technician Program and a new secretary was hired in May, 2016 to allow for orientation. No changes have been made to the program mission.

DATA ANALYSIS AND PROGRAM-SPECIFIC MEASUREMENTS

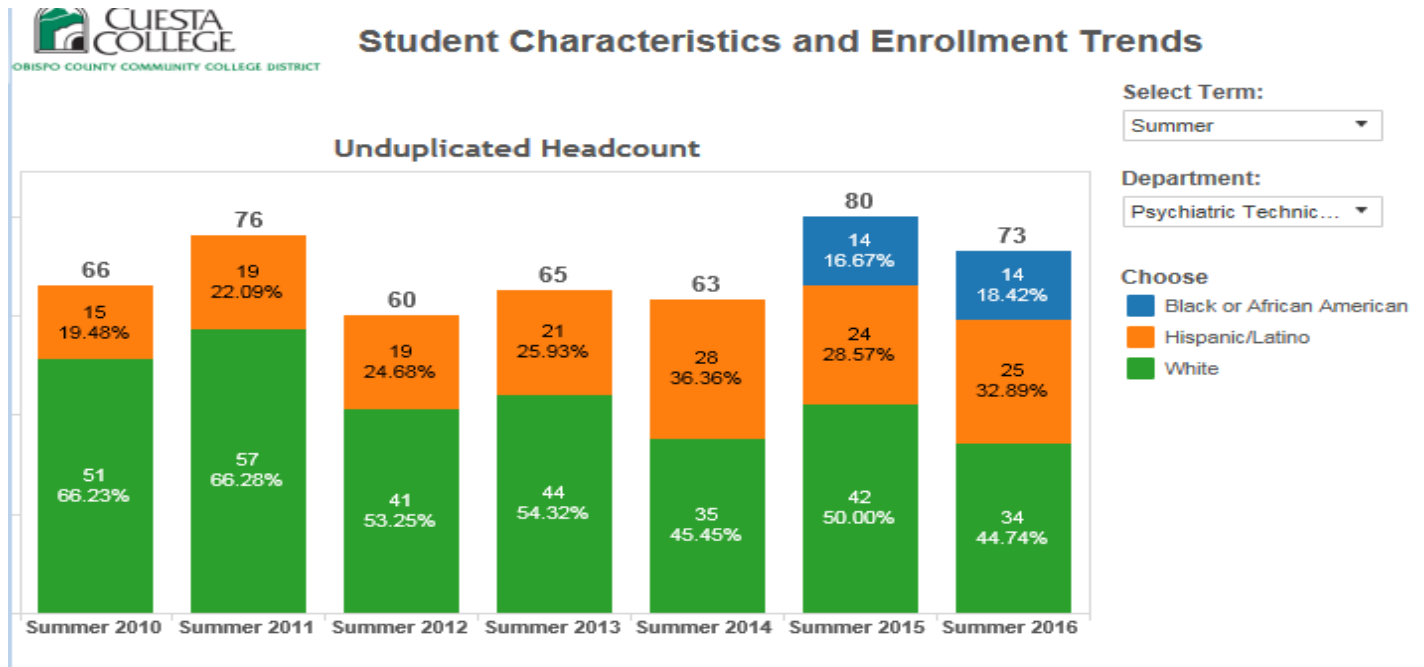
GENERAL ENROLLMENT (INSERT AGGREGATED DATA CHART)



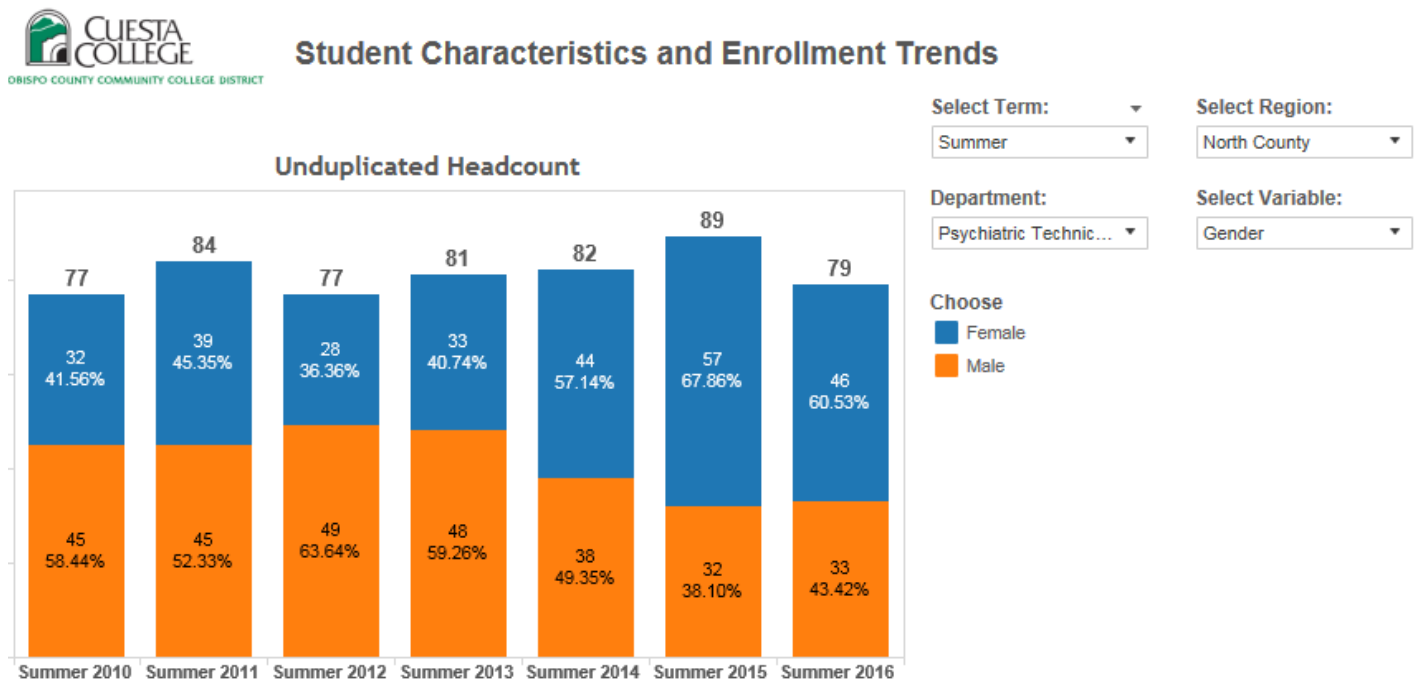
- Enrollment remains fairly static across all three terms and consistently exceeds college-wide data. Enrollment is based upon a contracted education agreement between the Department of State Hospitals-Atascadero (DSH-A) and Cuesta College. No change in enrollment is anticipated.
- A cap of three cohorts of 30 students per year is set by contractual agreement. No change in enrollment is anticipated.

INSTRUCTIONAL ANNUAL PROGRAM PLANNING WORKSHEET FOR 2017-2018

[Disaggregated Enrollment Data](#)



- There has been a noted increase in students self-identifying as Black or African American. The majority of these students are actually foreign-born students from a variety of African nations. They come to the program with varied backgrounds, educational levels and skills.



- There has been a steady decline in the numbers of male students enrolled over the past several years. It is unclear as to why this is happening. Recruitment efforts will be reviewed for any needed changes. It is possible that there may be a misconception in the general public that the Psychiatric Technician profession

INSTRUCTIONAL ANNUAL PROGRAM PLANNING WORKSHEET FOR 2017-2018

is a predominantly female profession. Recruitment activities will be reviewed with the DSH-Atascadero Recruitment Coordinator to attempt to identify new avenues for recruitment.

General Student Demand

SLOCCCD Program Review Data - Student Demand (Fill Rate)

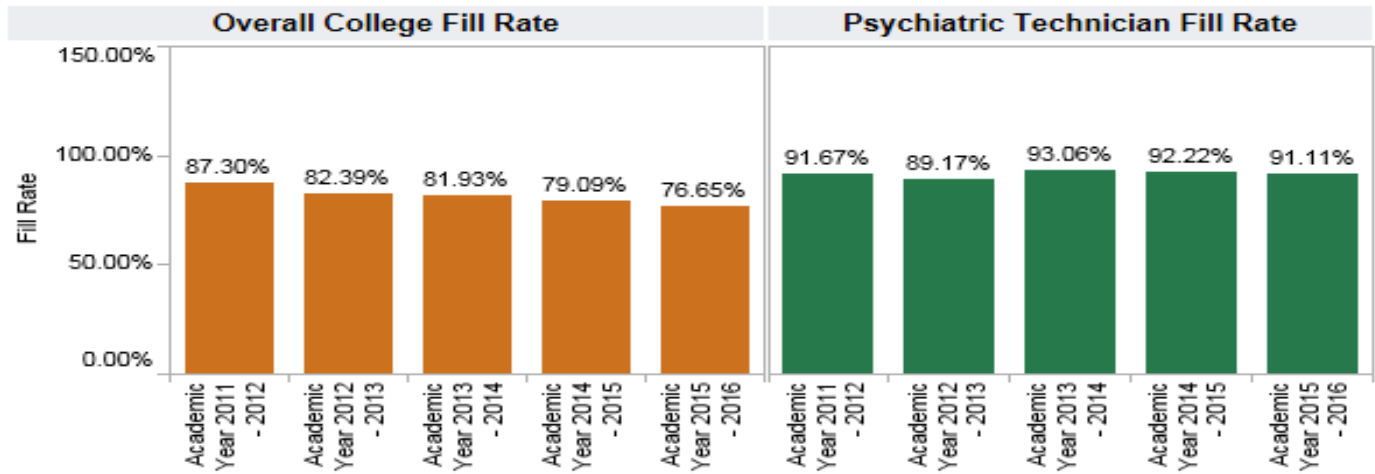
Department:



Psychiatric Technician

Course:

(All)



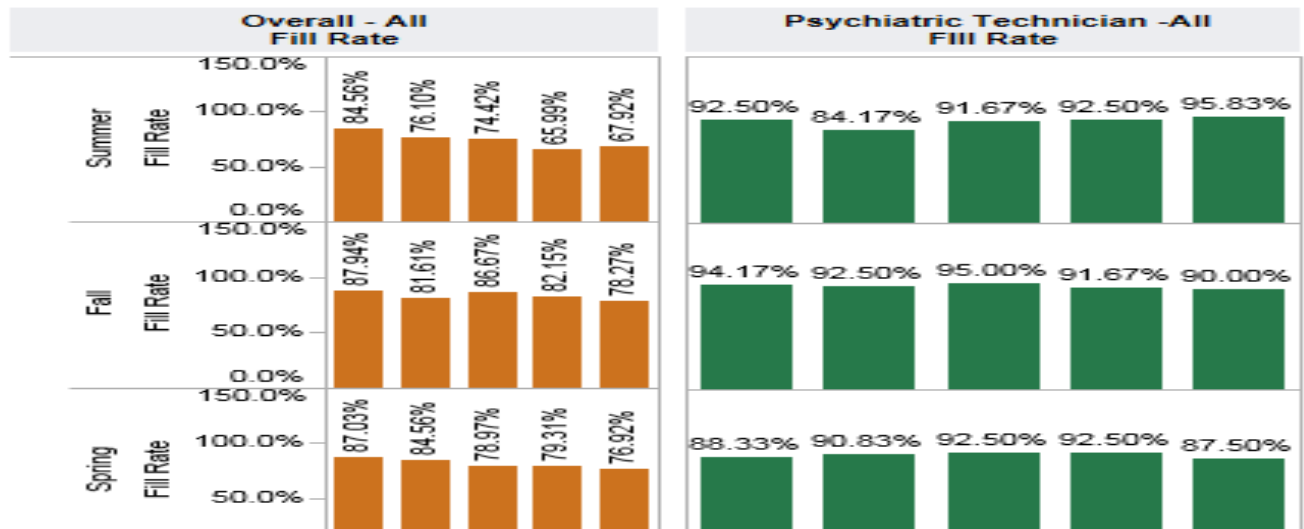
- Student demand has continued to increase steadily and greatly exceeds college-wide demand. The numbers of applications received are now averaging between 140-150 per term compared to 125-130 in 2015-2016. We receive applications from throughout the state.
- Fill rates are always at 100% at the start of each new cohort.
- Attrition varies from term to term. Students generally withdraw due to academic or personal issues. Students who do drop are eligible to reapply and re-enter the program within one year on a space available basis. A list is maintained of students eligible to re-enter.
- The Program Director and staff attend numerous recruitment events throughout each term and advertise via email and the Cuesta College website. DSH-Atascadero has created a Recruitment Coordinator office that travels state-wide to various recruitment events. The Program Director provides recruitment materials that are distributed at these events.
- DSH-Atascadero also advertises the program in the New Times/Sun newspapers and on Craigslist.
- The Program Director and staff hold public informational meetings six times each year.

INSTRUCTIONAL ANNUAL PROGRAM PLANNING WORKSHEET FOR 2017-2018

Disaggregated Student Demand Data

SLOCCCD Program Review Data - Student Demand (Fill Rate) Di

Department: Course: Region:

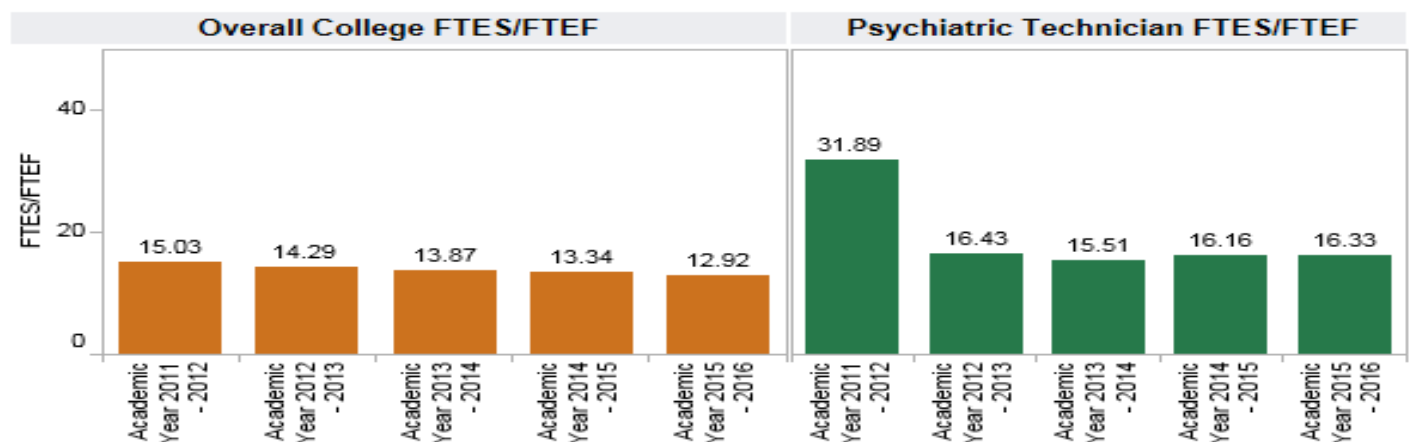


- Fill rates continue to exceed college-wide fill rates.
- The program has consistently been the top Psychiatric Technician Program in the state. The Board of Vocational Nurses and Psychiatric Technicians (BVNPT) website publishes state board exam pass rates for all programs and DSH-Atascadero/Cuesta College consistently holds the top spot.
- Demand for Psychiatric Technicians continues to grow state-wide.

General Efficiency (FTES/FTEF)

SLOCCCD Program Review Data - Efficiency (FTES/FTEF)

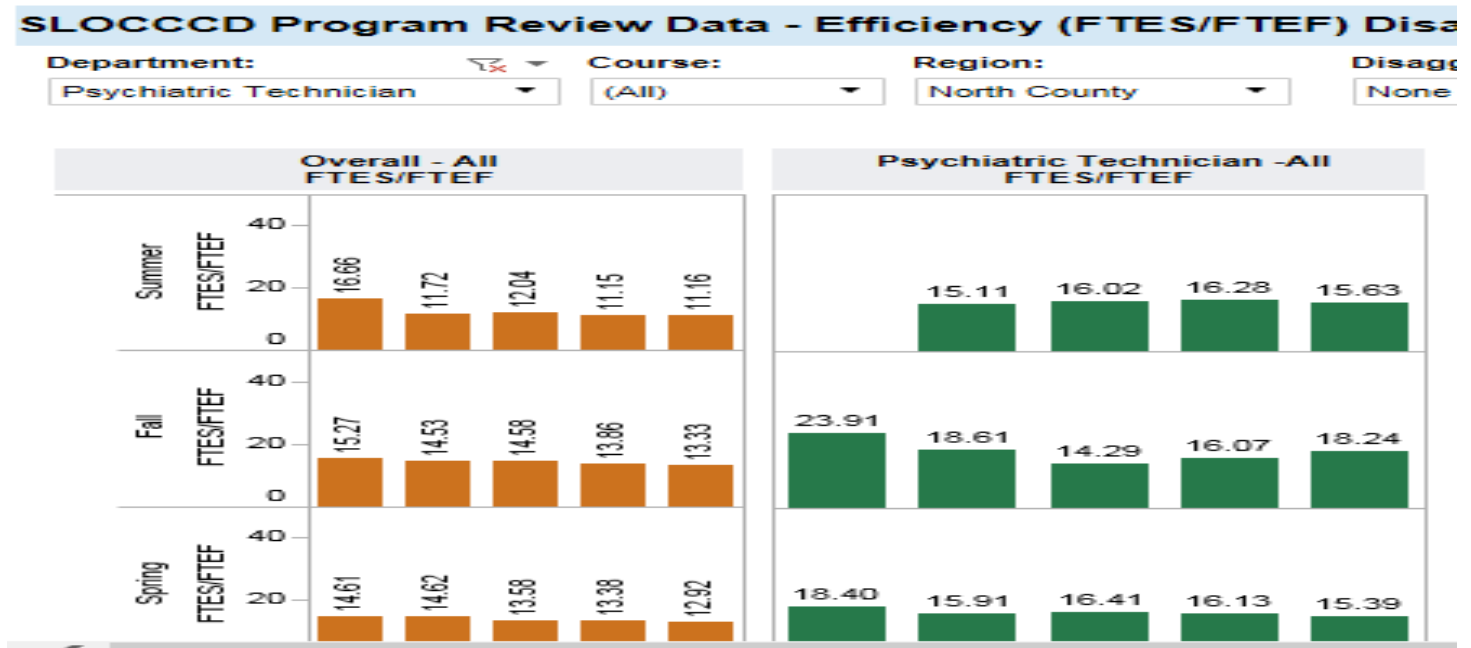
Department: Course:



INSTRUCTIONAL ANNUAL PROGRAM PLANNING WORKSHEET FOR 2017-2018

- The projected enrollment remains at 30 students per cohort three times a year, as mandated by the contractual agreement between DSH-Atascadero and Cuesta College.
- The Psychiatric Technician Program continues to exceed college-wide FTES/FTEF.
- The demand for Psychiatric Technicians continues to grow state-wide.
- The Psychiatric Technician Program maintains a 1:15 instructor-student ratio for clinical courses as mandated by the BVNPT.

[Disaggregated Efficiency Data](#)

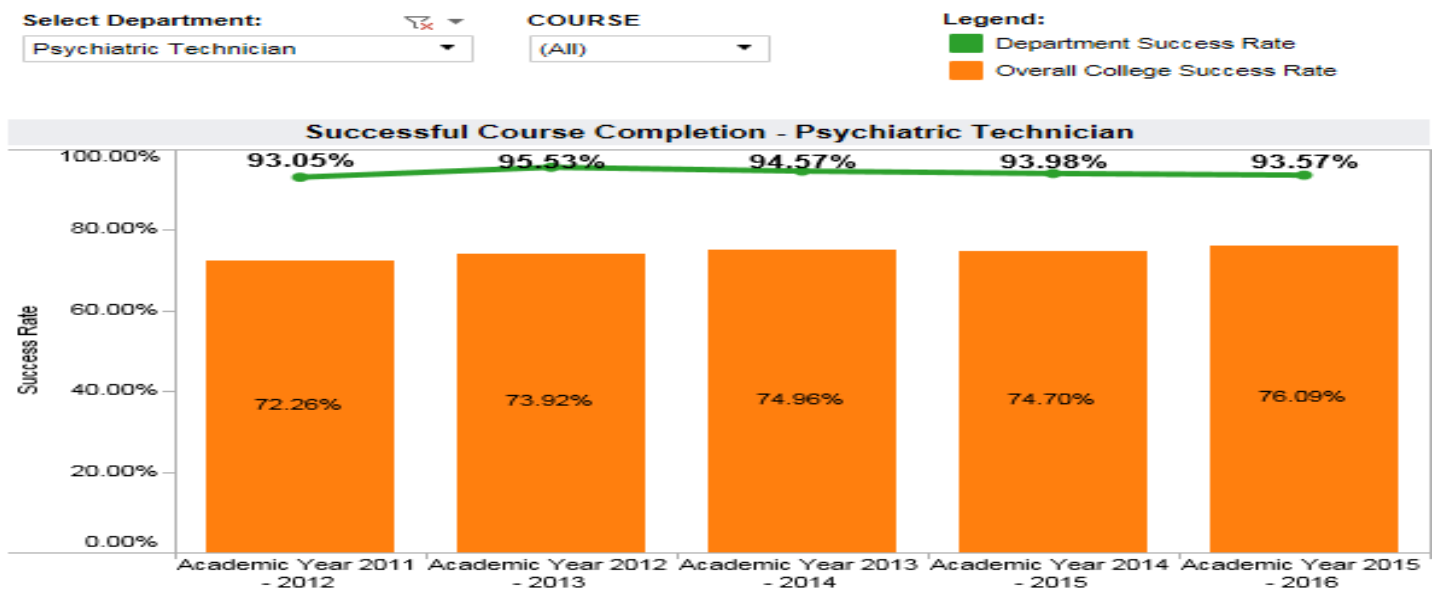


- The projected enrollment remains at 30 students per cohort three times a year, as mandated by the contractual agreement between DSH-Atascadero and Cuesta College.
- The Psychiatric Technician Program continues to exceed college-wide FTES/FTEF.
- The demand for Psychiatric Technicians continues to grow state-wide.
- The Psychiatric Technician Program maintains a 1:15 instructor-student ratio for clinical courses as mandated by the BVNPT.

INSTRUCTIONAL ANNUAL PROGRAM PLANNING WORKSHEET FOR 2017-2018

General Student Success – Course Completion

SLOCCCD Program Review Data: Successful Course Completion

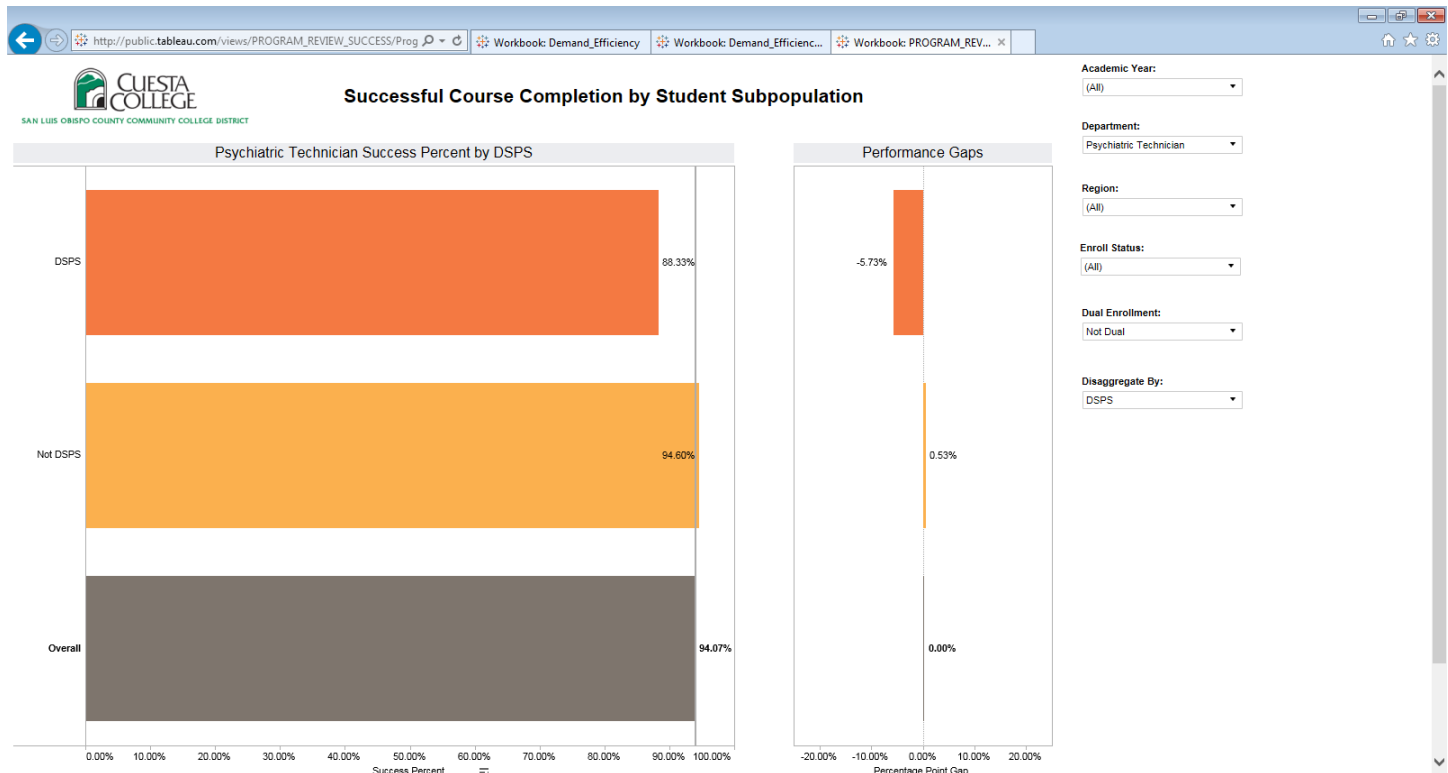


Psychiatric Technician Success Rate Table					
	Academic Year 2011 - 2012	Academic Year 2012 - 2013	Academic Year 2013 - 2014	Academic Year 2014 - 2015	Academic Year 2015 - 2016
Department Success..	93.05%	95.53%	94.57%	93.98%	93.57%
Total Enrollments	331	321	335	332	328

- Student course completion rates continue to far exceed college-wide success rates.
- Greater efforts have been made to identify students with special learning needs and refer them to the DSPS program early in the Program.
- Instructors have adopted additional methods of teaching (i.e., I-Clicker Audience Response Systems, online practice exams, etc.)
- Extra emphasis on program rigor and student commitment is presented to applicants during the initial application process and again at orientation.
- Faculty will strive to identify students with special learning needs and facilitate referral to DSPS for possible services.

INSTRUCTIONAL ANNUAL PROGRAM PLANNING WORKSHEET FOR 2017-2018

Disaggregated Success and Completion Data

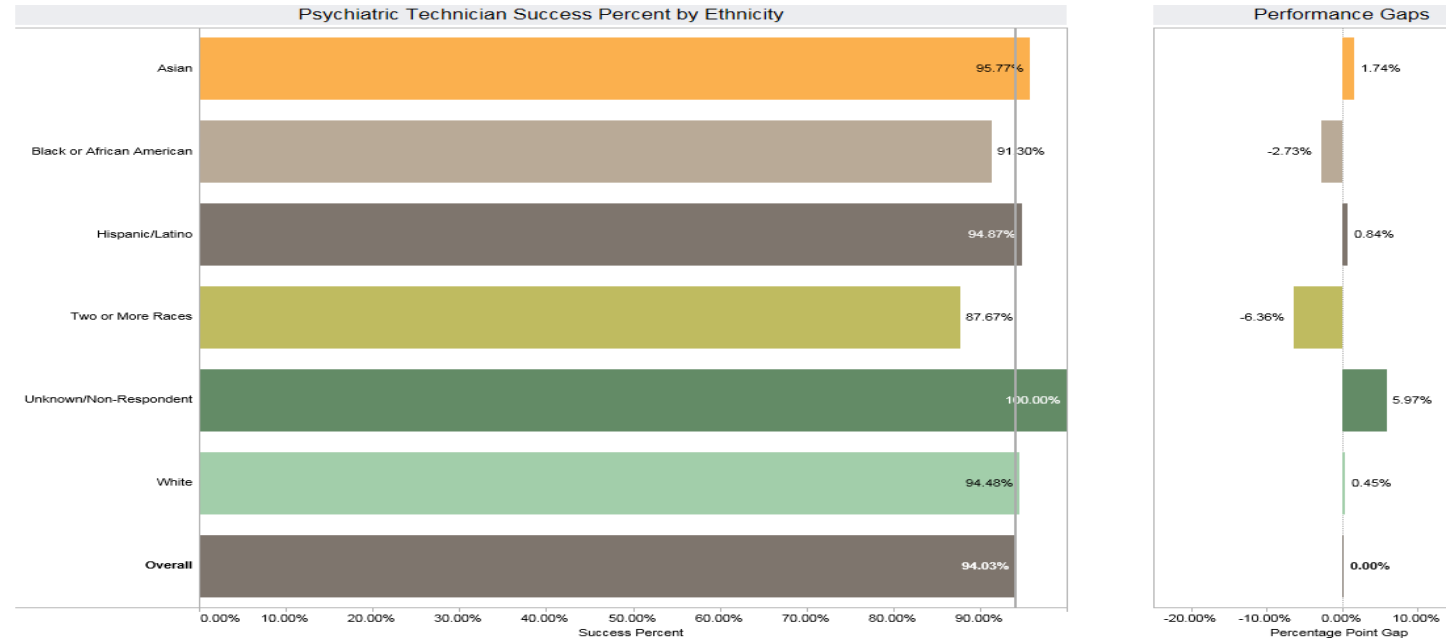


- DSPS students enrolled in the Psychiatric Technician Program are significantly less successful compared to non-DSPS students.
- Psychiatric Technician Program DSPS students perform significantly lower than DSPS students college-wide. This might be attributed to the rigor of the program. Students complete 61.5 units in a twelve month program.
- DSPS students are provided access to all services prescribed by the DSPS. Students who require testing accommodations are required to test at either of the Cuesta College campuses when campus is open. During periods when the campus is closed, accommodations are provided at the program classrooms at DSH-Atascadero. A failed attempt was made recently to provide a computer reader program to DSPS students during campus closure. The students who attempted to use it reported it to be too difficult to understand. A new strategy is needed to provide this accommodation in the future. The Program Director will work with the DSPS Director to resolve the issue.
- Some DSPS students choose not to avail themselves of testing on Cuesta College campuses due to the distance to the campuses.
- Students may fail to fully utilize all of the services and supports of the college due to the distance to the campuses. All students are encouraged to access and utilize all services and supports available through the college.
- DSPS students are encouraged to record classroom lectures and utilize a variety of study techniques.
- Instructors hold early morning and afternoon study/review sessions throughout each term for interested students.

INSTRUCTIONAL ANNUAL PROGRAM PLANNING WORKSHEET FOR 2017-2018



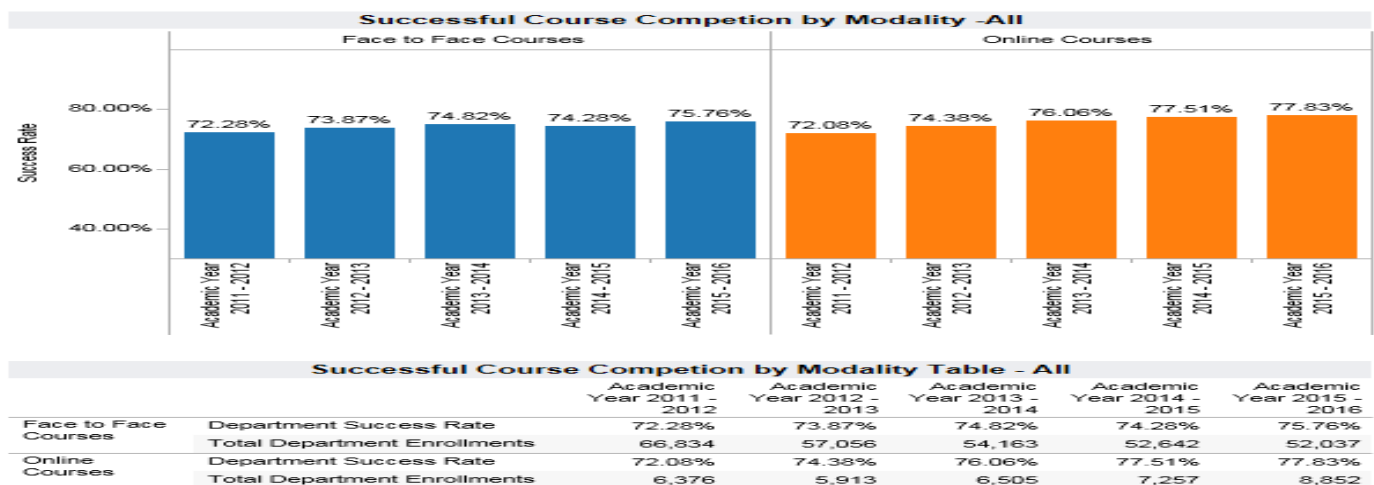
Successful Course Completion by Student Subpopulation



INSTRUCTIONAL ANNUAL PROGRAM PLANNING WORKSHEET FOR 2017-2018

- Psychiatric Technician Program students self-identifying as Black or African American or of two or more races performed significantly lower than other Psychiatric Technician Program students, but better than college-wide students of the same ethnicities.
- The majority of the students self-identifying as Black/African American are actually foreign-born students from a variety of African nations. They come to the program with varied backgrounds and educational levels. Some of these students have difficulty with the English language, especially in learning medical terminology. Some also have difficulty understanding and expressing the English language, although they have met the English requirement for admission to the program.
- Students of Asian ethnicity in the Psychiatric Technician Program outperformed other ethnicities similar to what was reported college-wide.
- Hispanic/Latino students in the Psychiatric Technician Program performed much better than those same students college-wide.
- All students are permitted to record classroom lectures and are encouraged to utilize a variety of study techniques.
- Instructors hold early morning and afternoon study/review sessions throughout each term for interested students.

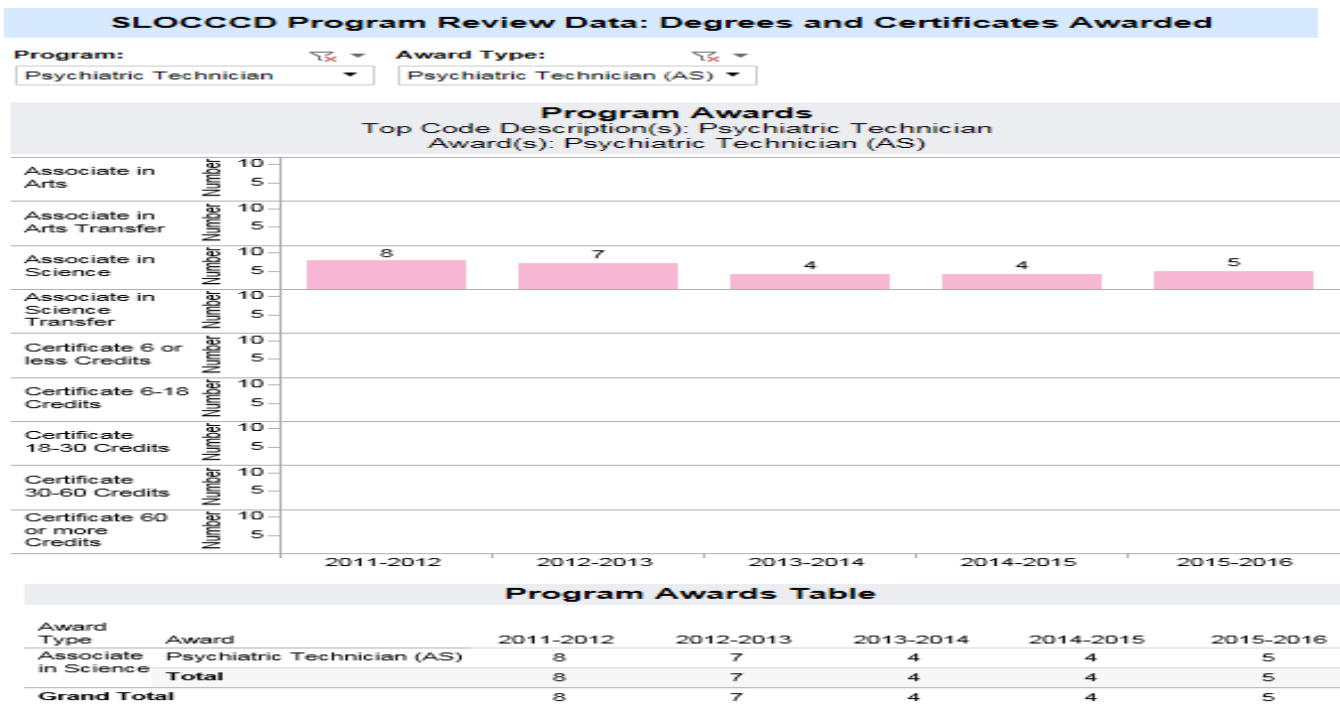
Student Success—Course Modality



- The Psychiatric Technician Program consists entirely of face-to-face courses. Each week, students spend 14 hours in the classroom and 21 hours in a clinical setting. The program continues to exceed the college-wide success rates.

INSTRUCTIONAL ANNUAL PROGRAM PLANNING WORKSHEET FOR 2017-2018

Degrees and Certificates Awarded



- A number of students enter the Psychiatric Technician Program already possessing an Associate's degree or higher.
- Attaining an A.S. degree is secondary to the needed qualification for employment as a Psychiatric Technician. Thus, the small number of students who earned A.S. degrees is not unexpected. No change is anticipated in next year's projection.
- Psychiatric Technicians working for the State of California can advance in salary by completing additional college units and working towards a degree.
- Graduates often pursue additional college units in the pursuit of higher salaries and/or job promotion.
- Students are provided with degree requirements both prior to enrolling and while in the program. This information is included in Psychiatric Technician Program recruitment materials and posted on bulletin boards outside each classroom.
- Students also meet with a counselor during program registration/orientation and receive information on the Associate of Science degree.

OTHER RELEVANT PROGRAM DATA (OPTIONAL)

- In June, 2015, the Psychiatric Technician program was granted a four-year re-accreditation from the Board of Vocational Nursing & Psychiatric Technicians (BVNPT) extended to June, 2019.
- The Psychiatric Technician program continues to be one of the top-ranked Psychiatric Technician programs in the State.
- Effective March 1, 2016, the BVNPT initiated a new state board licensing exam.

INSTRUCTIONAL ANNUAL PROGRAM PLANNING WORKSHEET FOR 2017-2018

BVNPT Psychiatric Technician Program CAPTLE Pass Rates

Qtr./Year	PASS	% PASS	FAIL	% FAIL	TOTAL # TESTED
4 TH /2016	No results released by the BVNPT				
3 RD /2016	No results released by the BVNPT				
2 ND /2016	No results released by the BVNPT				
1 ST /2016	12	92%	1	8.33%	13
4 TH /2015	19	90.48%	2	9.52%	21
3 RD /2015	23	100%	0	0	23

PROGRAM OUTCOMES ASSESSMENT AND IMPROVEMENTS CHECKLIST AND NARRATIVE

CHECKLIST:

- ☒ Location of current SLO assessment cycle calendar is: V:drive/nursing/CPAS_formerly SLOs_for_Nursing-and_Allied Health/Program_Course_Assessment_Cycles/PSYT_Assessment Cycle Calendar 2016-2020. The master calendar *San Luis Obispo County Community College District Timeline of Learning Outcome Assessment* details the student learning outcome assessment cycle for the entire district. It is accessed from the Institutional Research webpage on the Outcomes and Assessment link.
(https://public.tableau.com/views/CYCLE_1/Master_Cycle?:amp;:embed=y&:display_count=no&:showVizHome=no#1).
- ☒ The SLO assessment cycle calendar was last updated in 2016: The current calendar on the V: drive runs through 2020. The master calendar runs through 2026.
- ☒ All PSYT courses are assessed on a biennial basis. Per the assessment calendar, the courses will be assessed next in Fall 2018. These assessments will take place in eLumen.
- ☒ To date, no PSYT course assessments have been completed in eLumen.
- ☒ A sustainability plan has not been established for the Psychiatric Technician Program.

Narrative:

Psychiatric Technician Program policies for all three terms continue to be reviewed and revised to improve consistency across terms. The Student Handbook has been revised and policies more clearly stated. All course syllabi are reviewed and revised each term and are more consistent in content. The implementation of mandatory online practice exams in all three terms has been implemented. Students are now required to complete exams each term including content from previous terms.

PROGRAM PLANNING / FORECASTING FOR THE NEXT ACADEMIC YEAR

A comprehensive review of all pharmacology modules has just been initiated by the Program Director and faculty to ensure adherence to the BVNPT-approved curriculum. This was initiated as a result of the revised CAPTLE test plan. The new test plan increased the percent of medication related questions. These modules are primarily taught by the hospital pharmacists at DSH-Atascadero. All aspects of the curriculum are being reviewed, as well as instructional tools, materials and strategies. This review may identify needed curriculum changes. Medication carts and medication administration supplies have been obtained for the Skills Lab and each classroom. Medication administration skills checklists have been developed and implemented in each of

INSTRUCTIONAL ANNUAL PROGRAM PLANNING WORKSHEET FOR 2017-2018

the three terms. Additional opportunities for students to practice and administer medications are being offered whenever possible.

There is an ongoing need for additional equipment and supplies. Updated manikins and anatomical models would increase student learning by allowing for more realistic opportunities to perform nursing skills. Updated textbook resources and DVDs are needed to stay current and meet industry standards. Students need access to an electronic medical record system to learn and practice nursing documentation. Equipment and software for this is needed.

No facility changes are anticipated. Additional clinical affiliates are being sought to bolster our current pool of clinical partners. One faculty member will retire in June, 2017 and recruitment is underway to hire full-time Nurse Instructor.