

Educational Master Planning Challenges

March 12, 2012

Game Plan

- **Community**

(Core Principles 1, 5, 7, 10)

- **Student Profile**

(Core Principles 1, 3, 5, 7, 10)

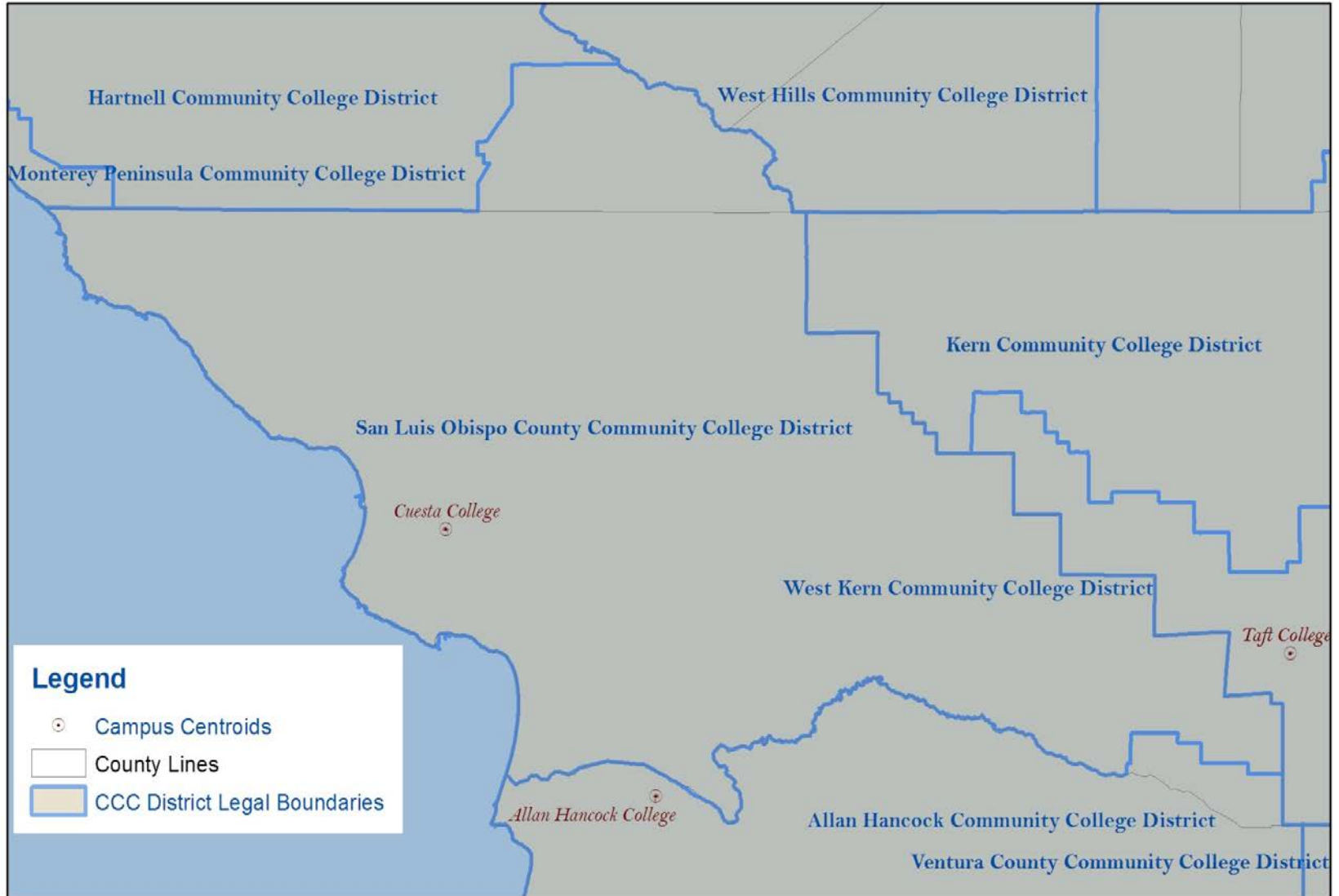
- **Student Success and Completion**

(Core Principles 1, 4, 8)

- **Other Factors**

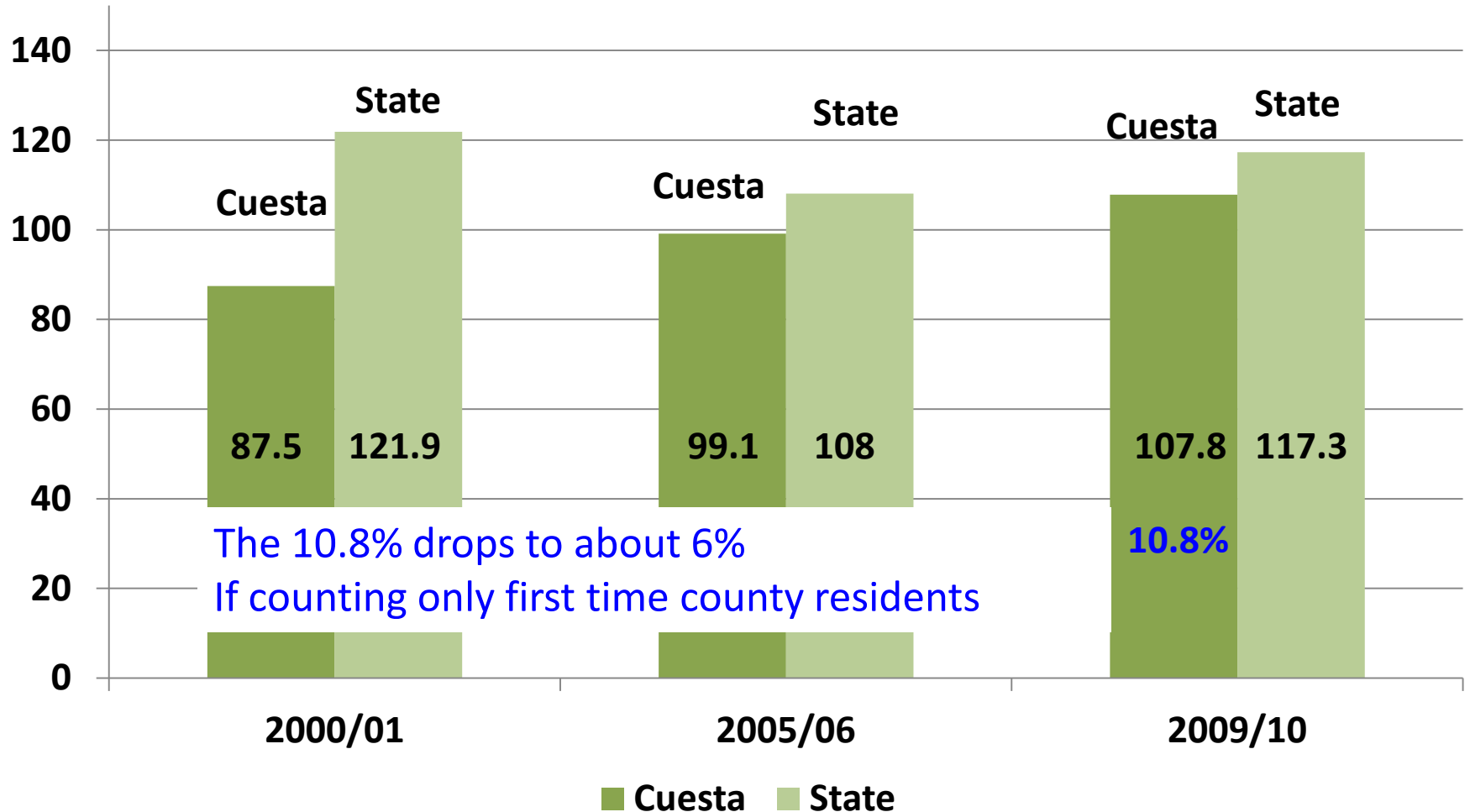
What is our
COMMUNITY, and
how is it changing?

San Luis Obispo County Community College District Service Area



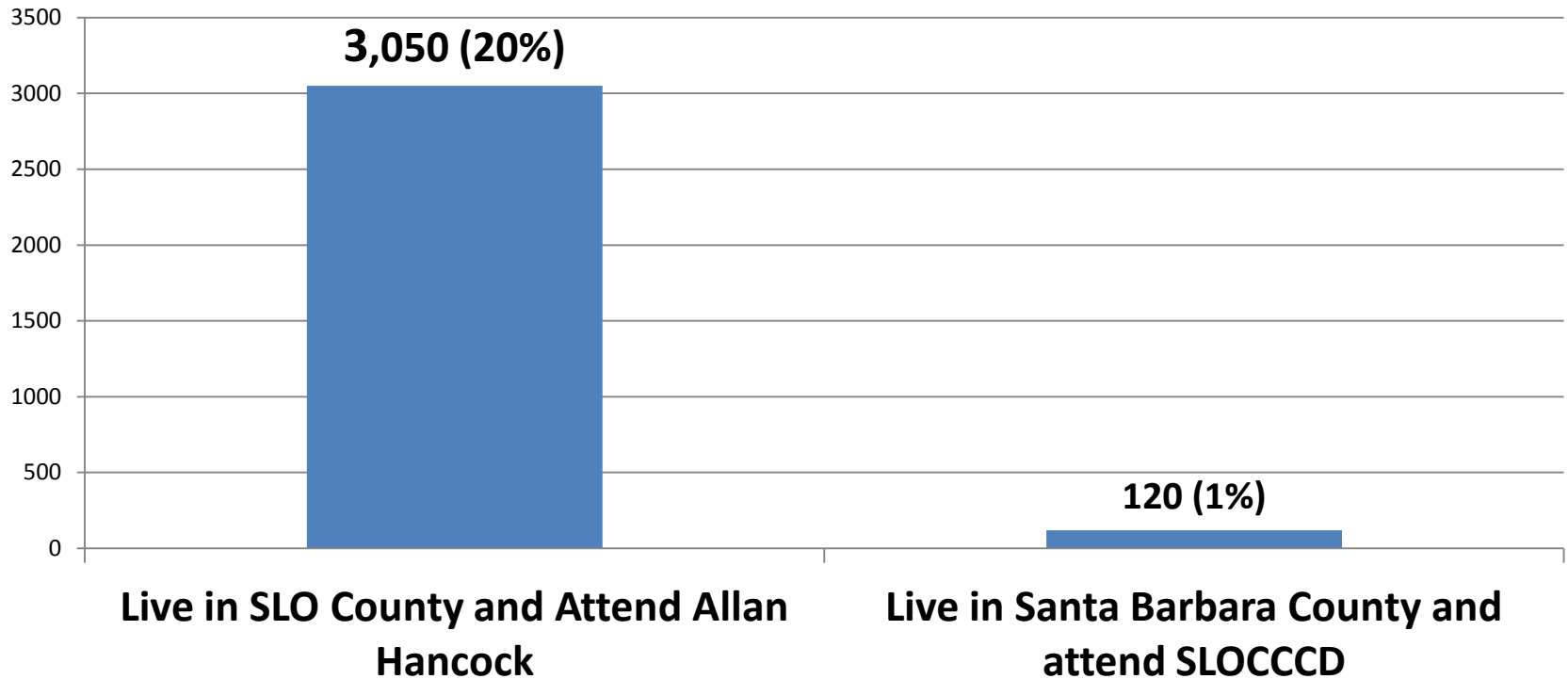
SOURCE:CCGIS.org District Boundary Maps

Participation Rate per 1000 Residents

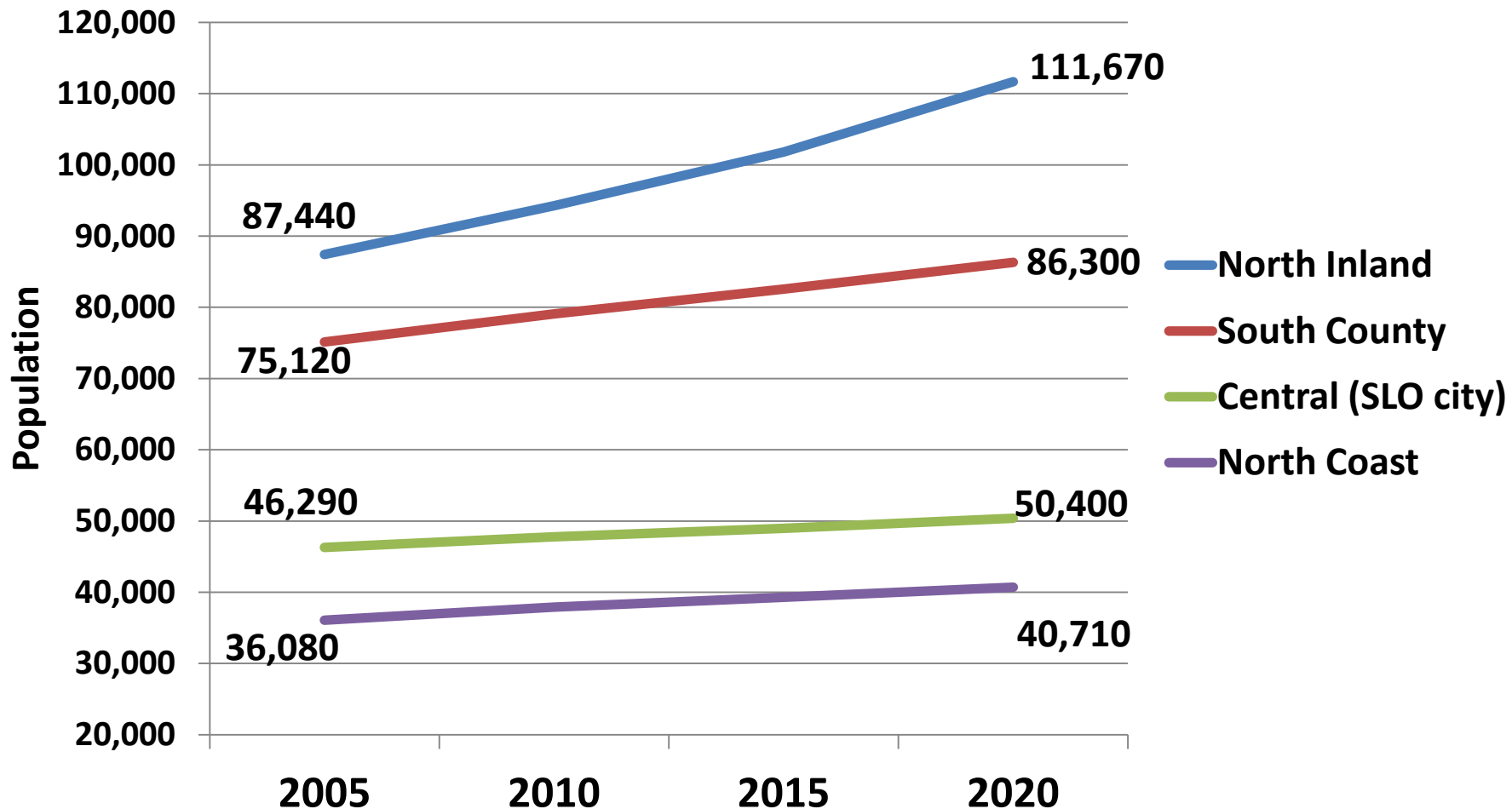


Fall 2011 inter-district flow of students between SLOCCCD and AHJCCD

SLOCCCD does attract students from many other counties.

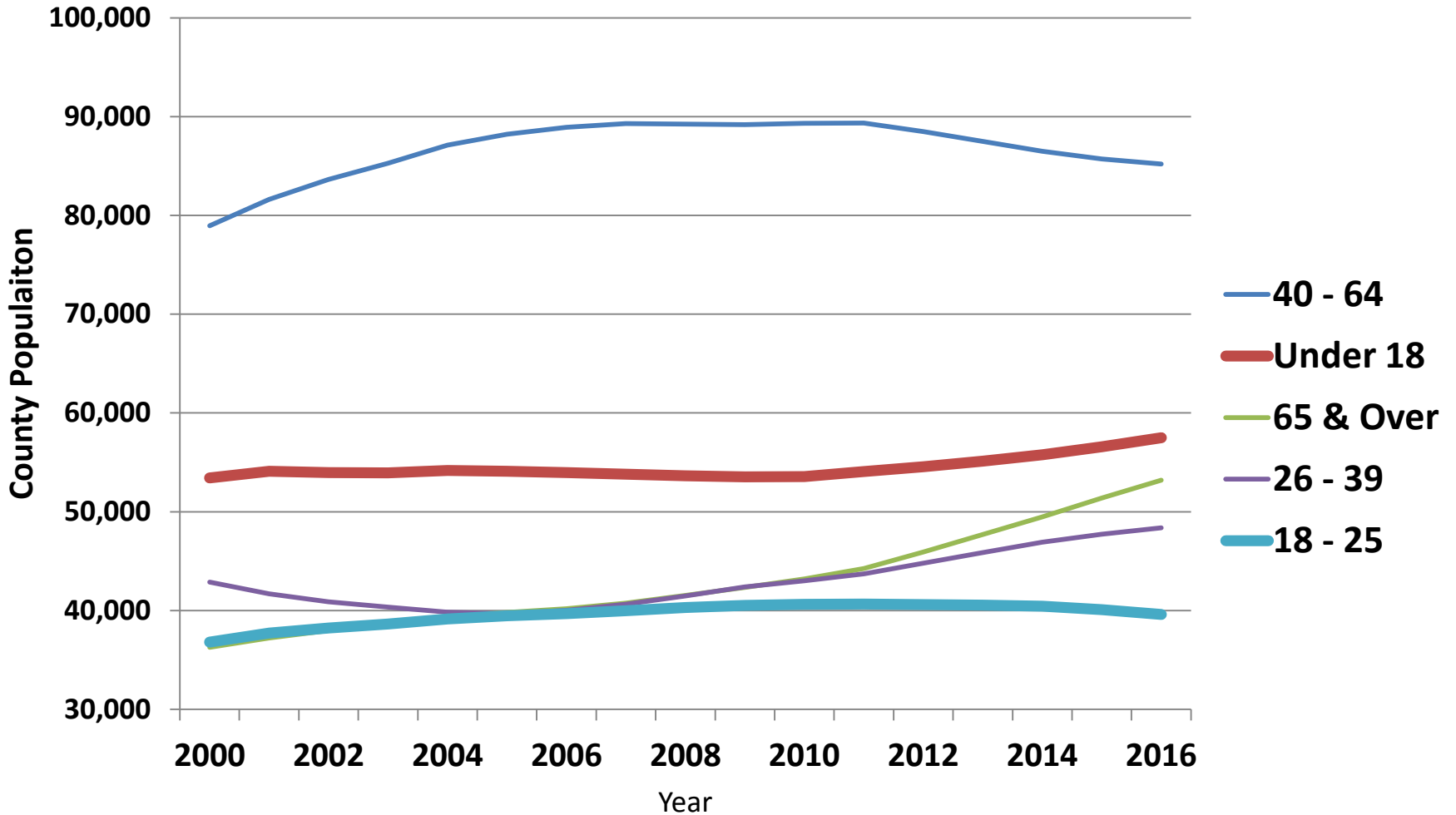


Projected Population Increase by County Region (2005 – 2020)



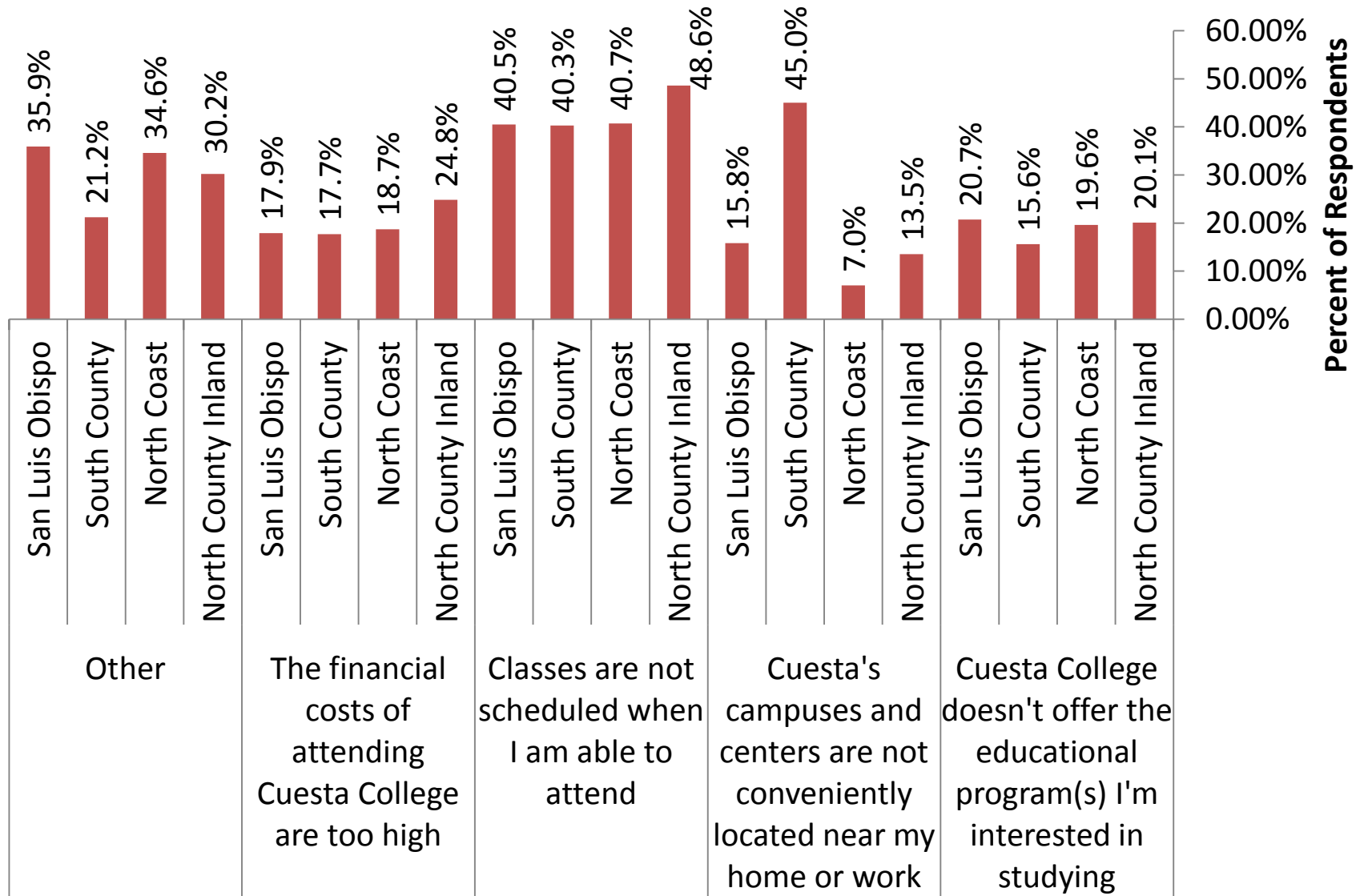
Source: Economic Research Associates
(ERA) - Long Range Socio-Economic
Projections

SLO County Projected Population Increase by Age (2000 – 2016)



Source: California Department of Finance
Demographic Research Projections

Perceived Obstacles to Attending Cuesta College



Source: Cuesta College Community Survey (2011)

General Findings - Community

- 1) Participation rate increasing, but still lags behind the state
- 2) Twenty percent of Allan Hancock's fall 2011 headcount resided in San Luis Obispo County whereas only one percent of Cuesta's fall 2011 headcount resided in Santa Barbara County. *Does this represent a large number of units?*
- 3) Projected population growth is forecasted to be in the North and South regions of the county,
- 4) Projected declines in 18-24 year old cohort; strongest projected growth in 65+ age group
- 5) Bulk of county population increase projected to occur in populations with low college-going rates
- 6) Greatest reported barrier to attending Cuesta College is that courses are not scheduled when students can attend

Possible Challenge?

- Challenge: How can SLOCCCD maintain current enrollment and consequently fiscal stability given projected declines?

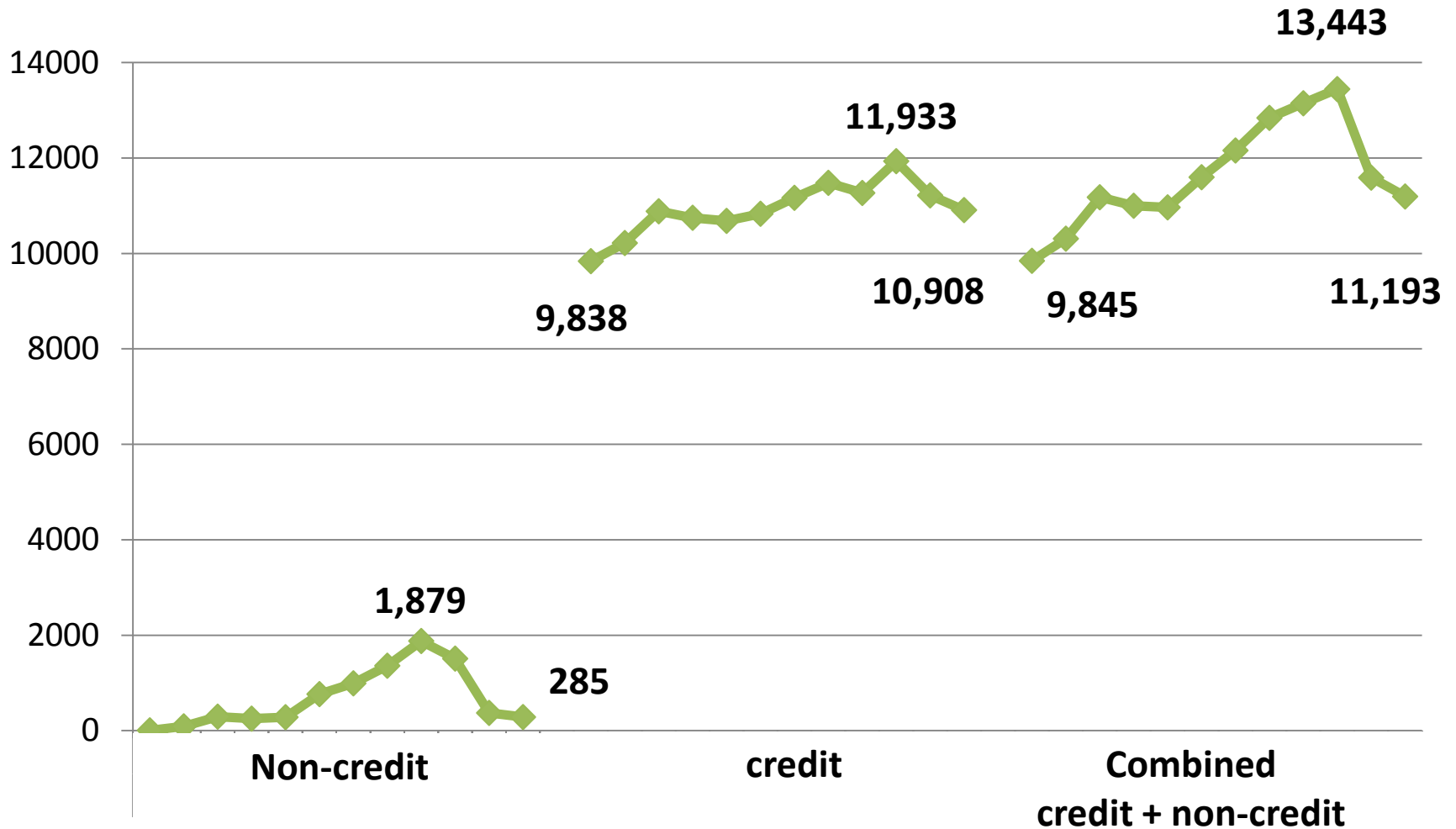
Based on analysis:

1. the 18-24 year old cohort is projected to decline,
2. nearly 3,000 SLO County residents attend Allan Hancock each term,
3. the main growth in the county is in groups who have traditionally lower college-going rates?

Other Challenges?

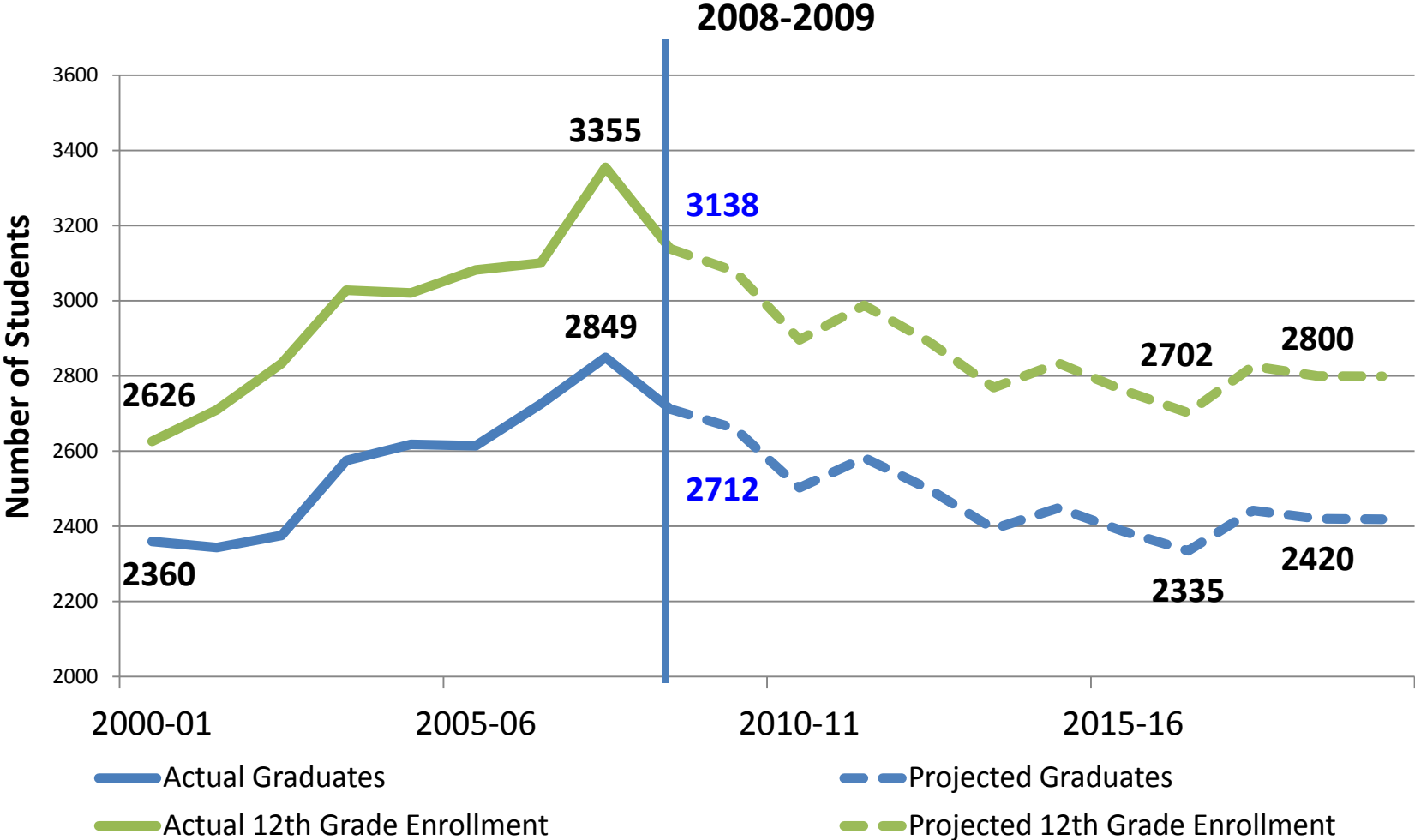
What is our
STUDENT PROFILE?

Non-Credit & Total Student Headcount (Fall 2001 - Fall 2011)



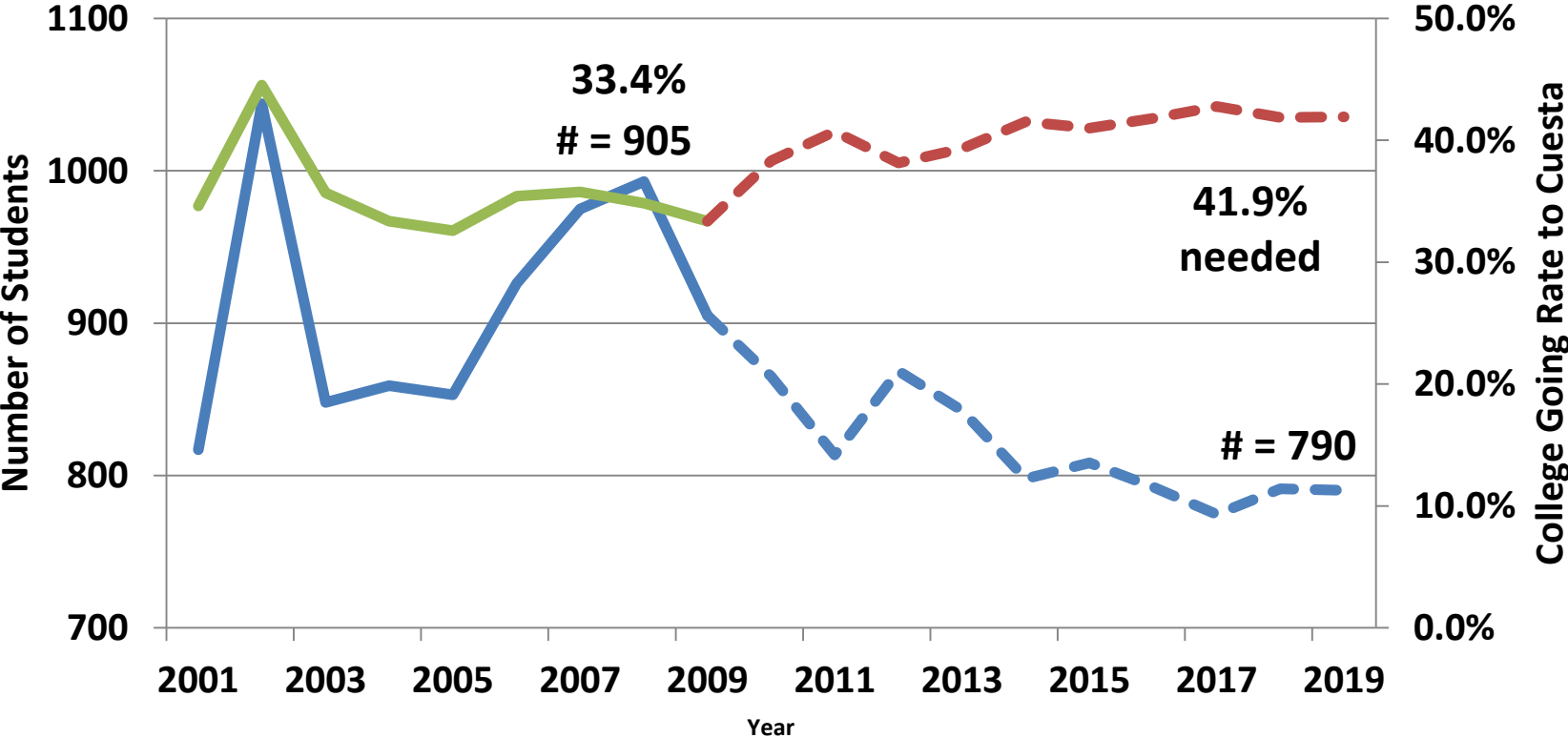
Predicted SLO Public High School 12th Grade Enrollment and Graduates

(Actual and Projected 2000/01 - 2018/19)



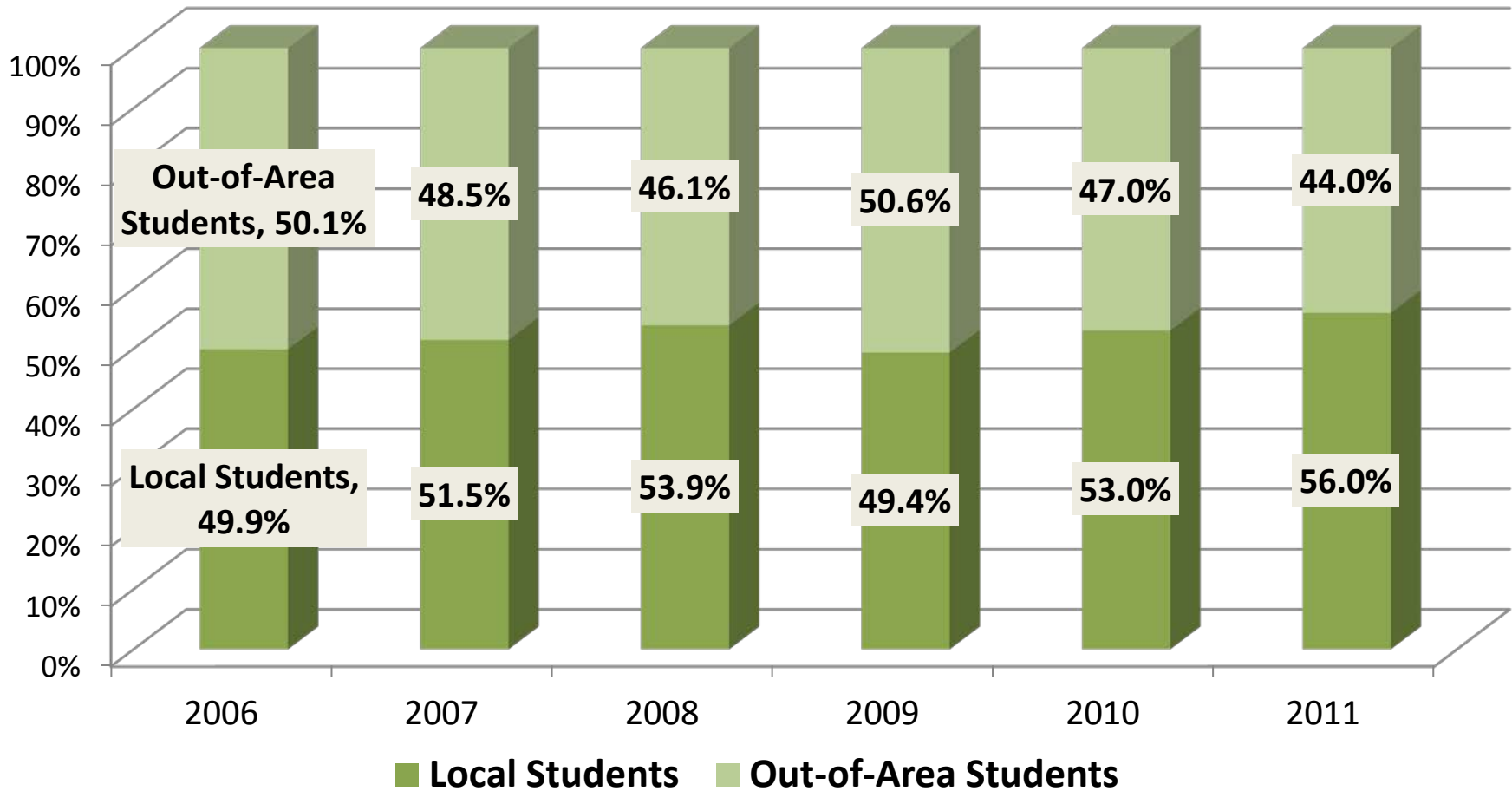
Source: California Department of Finance 2010 K-12 Series

Local High School Going to Cuesta College

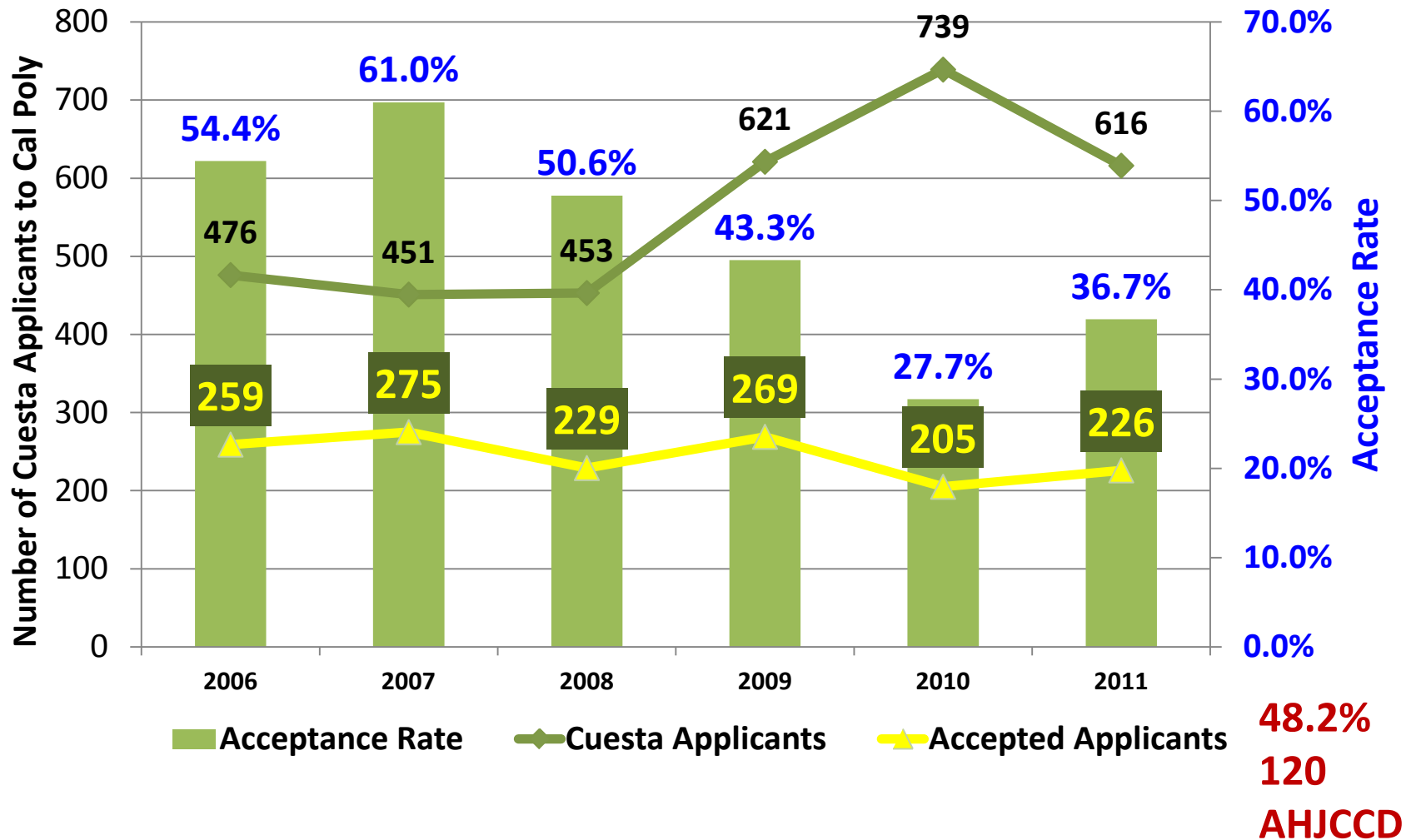


- Actual Cuesta College Enrollments
- Projected Cuesta College Enrollments Given Current College Going Rate (33.4%)
- Actual College Going Rate To Cuesta College
- College Going Rate To Cuesta College Required to maintain 2008 High School Going Counts

Cuesta College Local and Out-of-Area First-Time Students under 21 years of age (F06 - F10)



Cuesta Applications and Acceptance Rates to Cal Poly (F06 - F11)



General Findings – Student Profile

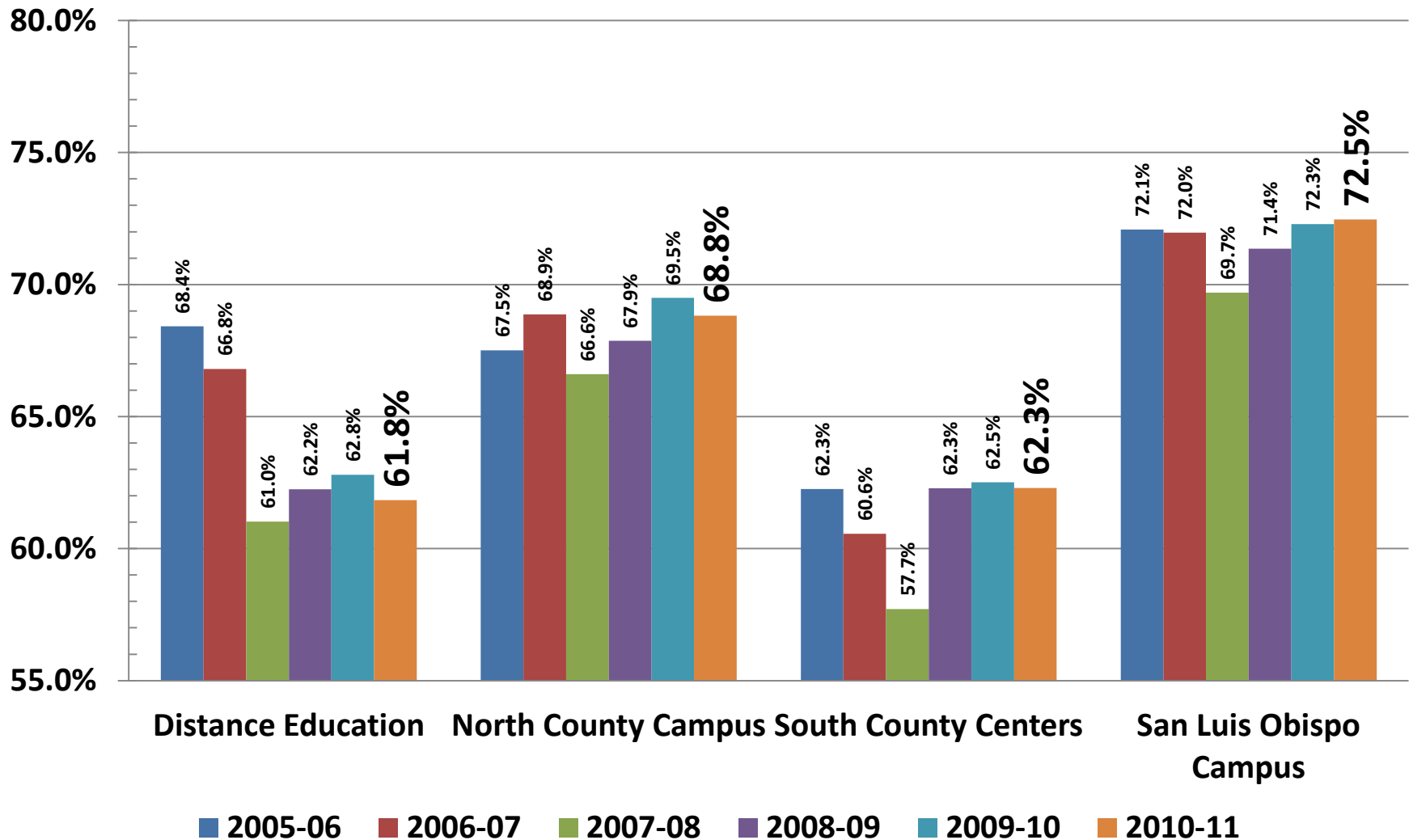
- 1) Overall number of Local High School graduates projected to decrease
- 2) Percentage of Local High School graduates going to college also decreasing
- 3) Out-of-Area demand decreasing
- 4) Cal Poly impacted; CSU Channel Islands is local CSU

Possible Challenge

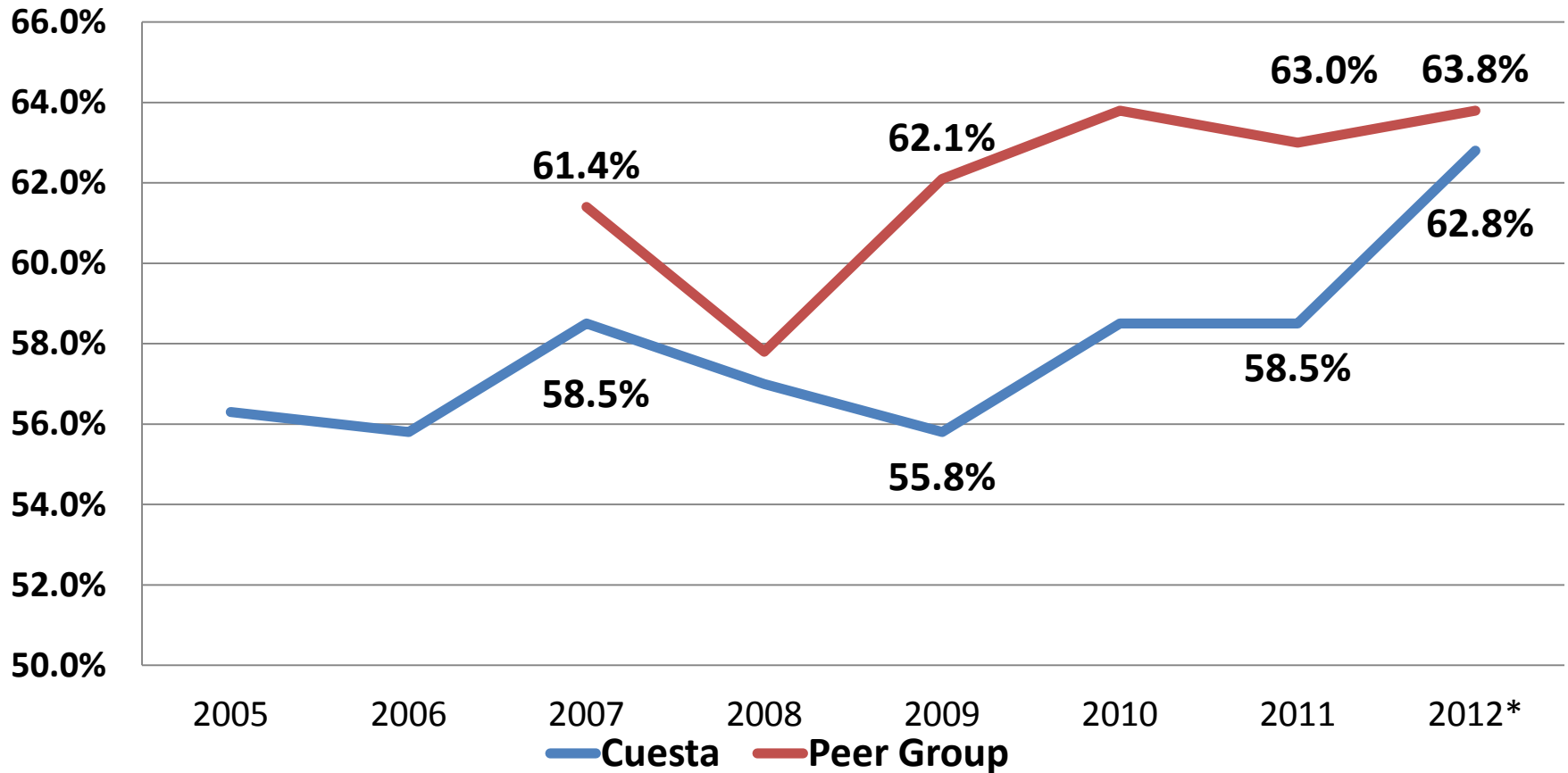
- Given predicted decreases in local high school grads and potential decreases in out-of-area student demand, how will SLOCCCD meet enrollment targets?

Are our students
successful?

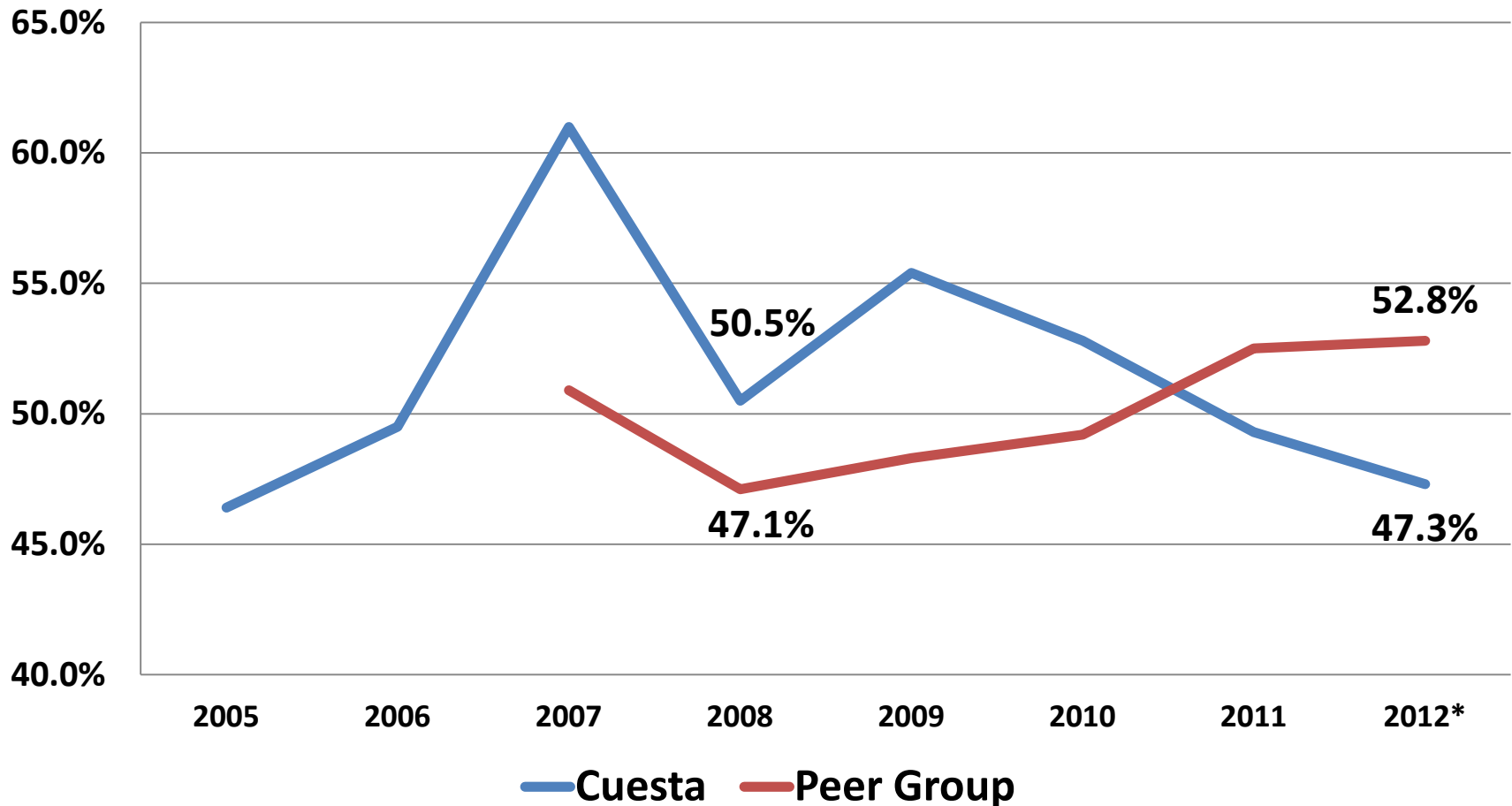
Course Success Rates by Educational Region (Grade of A, B, C, or CR) 2005/06 - 2010/11



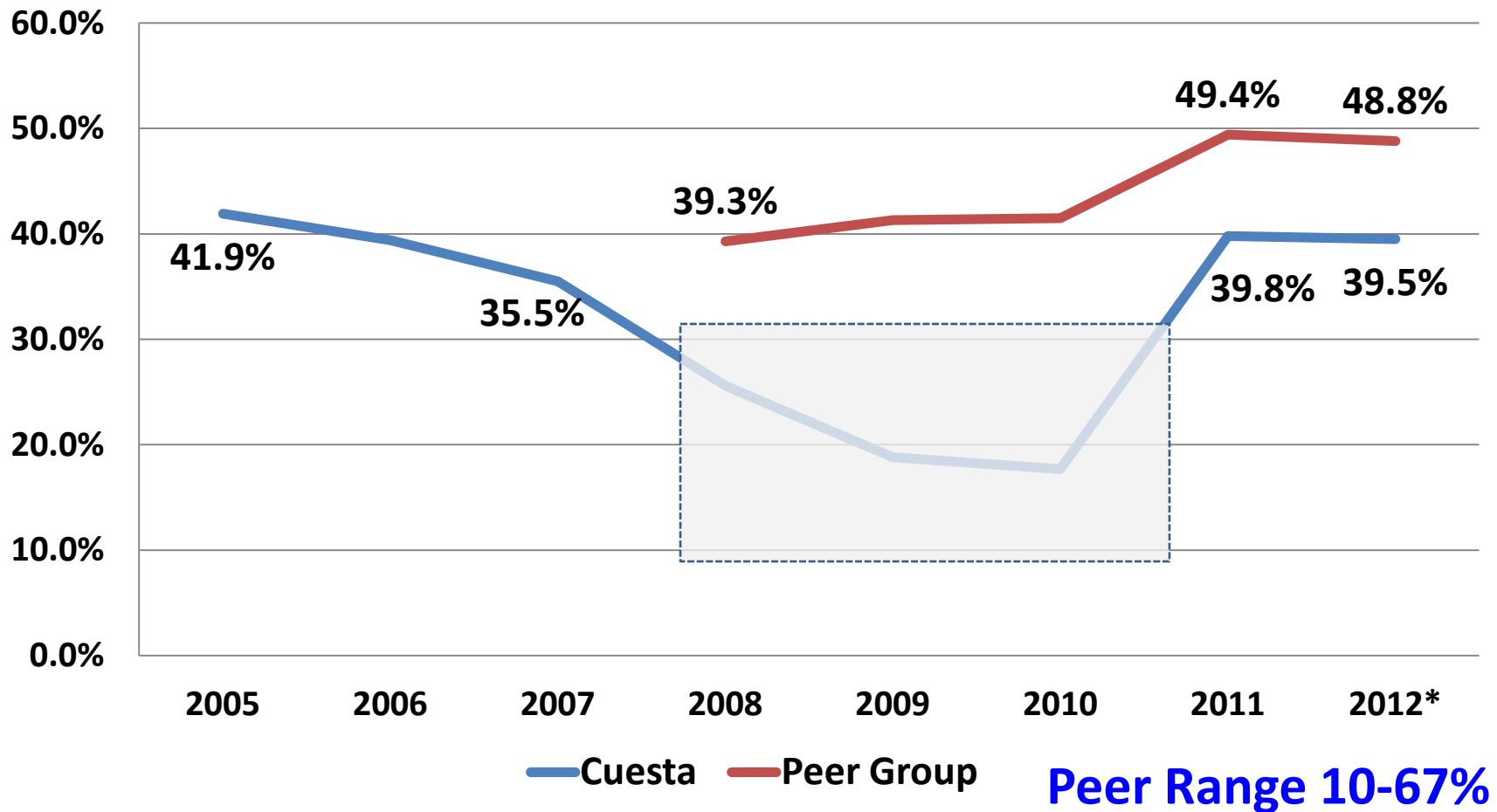
Annual Successful Course Completion Rate for Credit Basic Skills Courses



Improvement Rate for Credit Basic Skills Courses, 3 year cohorts ARCC

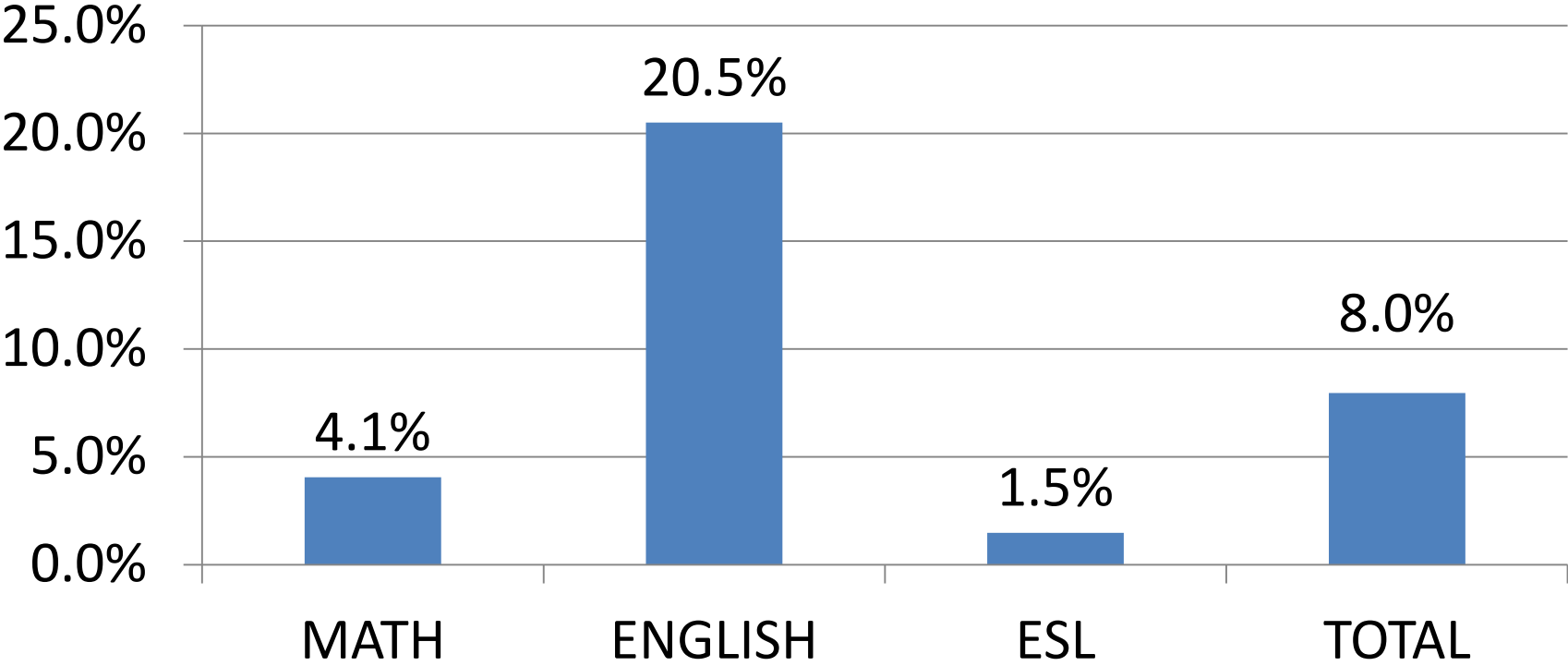


Improvement Rate for Credit ESL Courses - ARCC

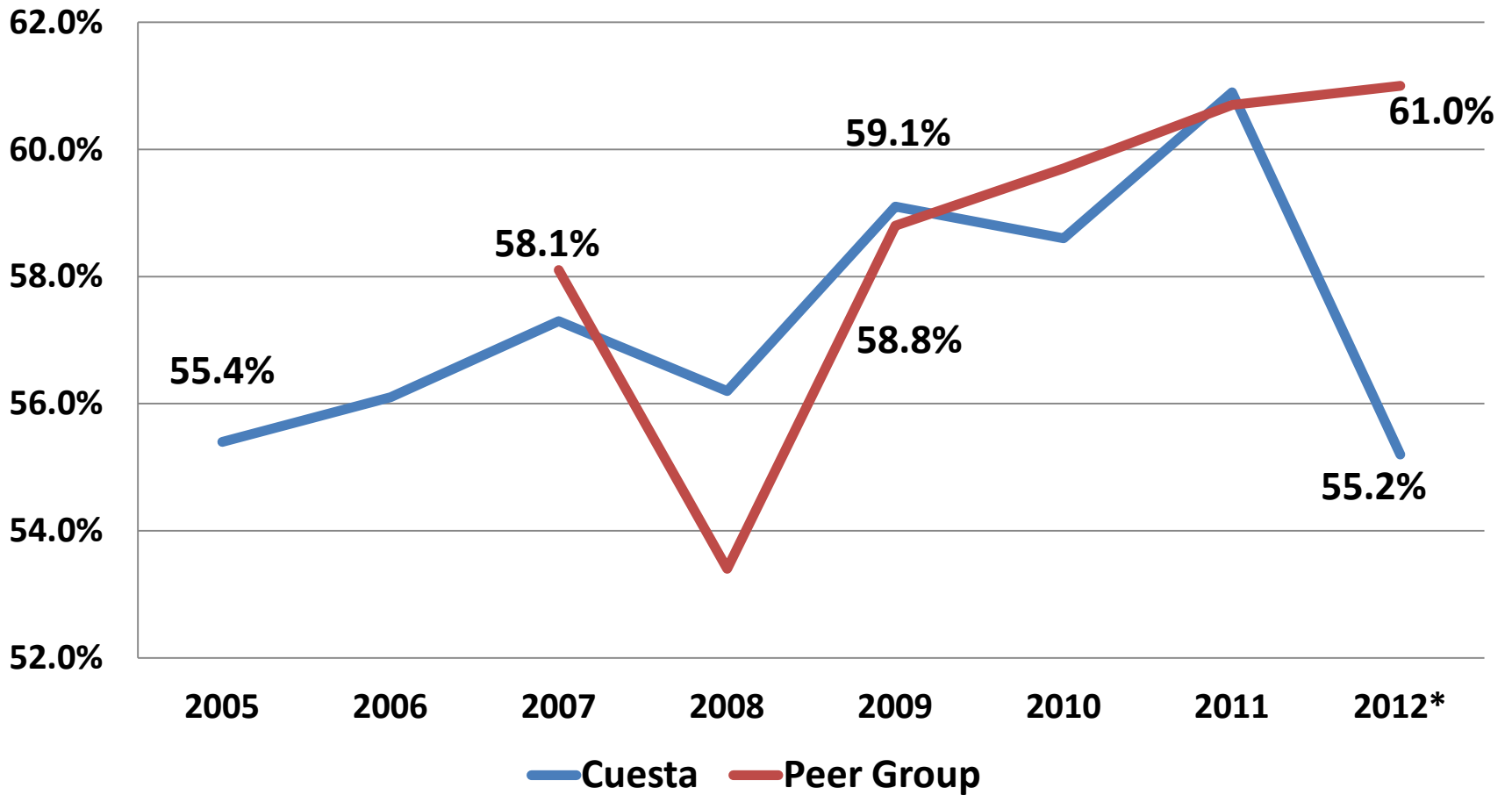


Math, English, ESL Progression

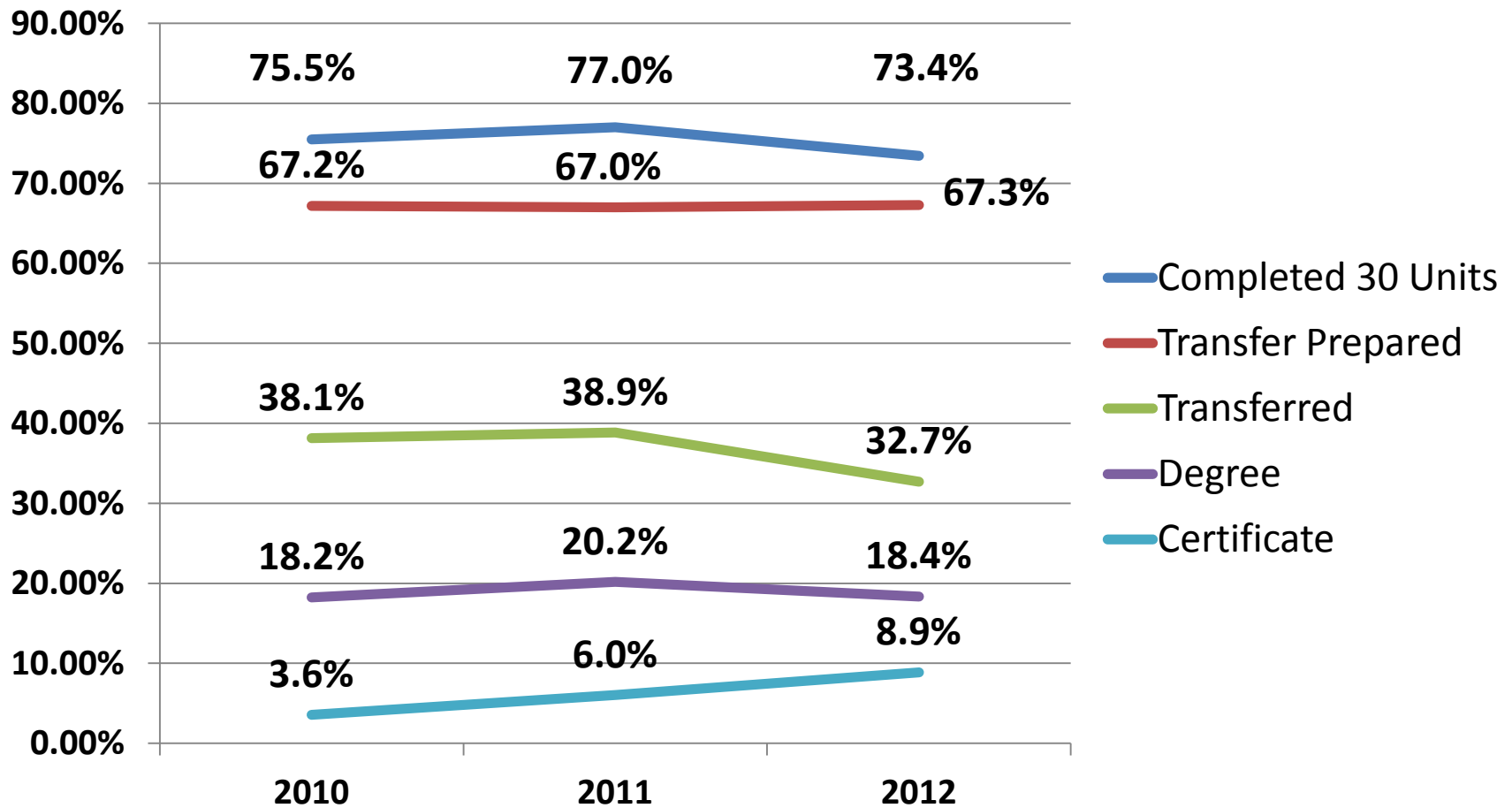
Percent of students successfully progressing through entire Basic Skills sequences within four years



Student Progress and Achievement ARCC



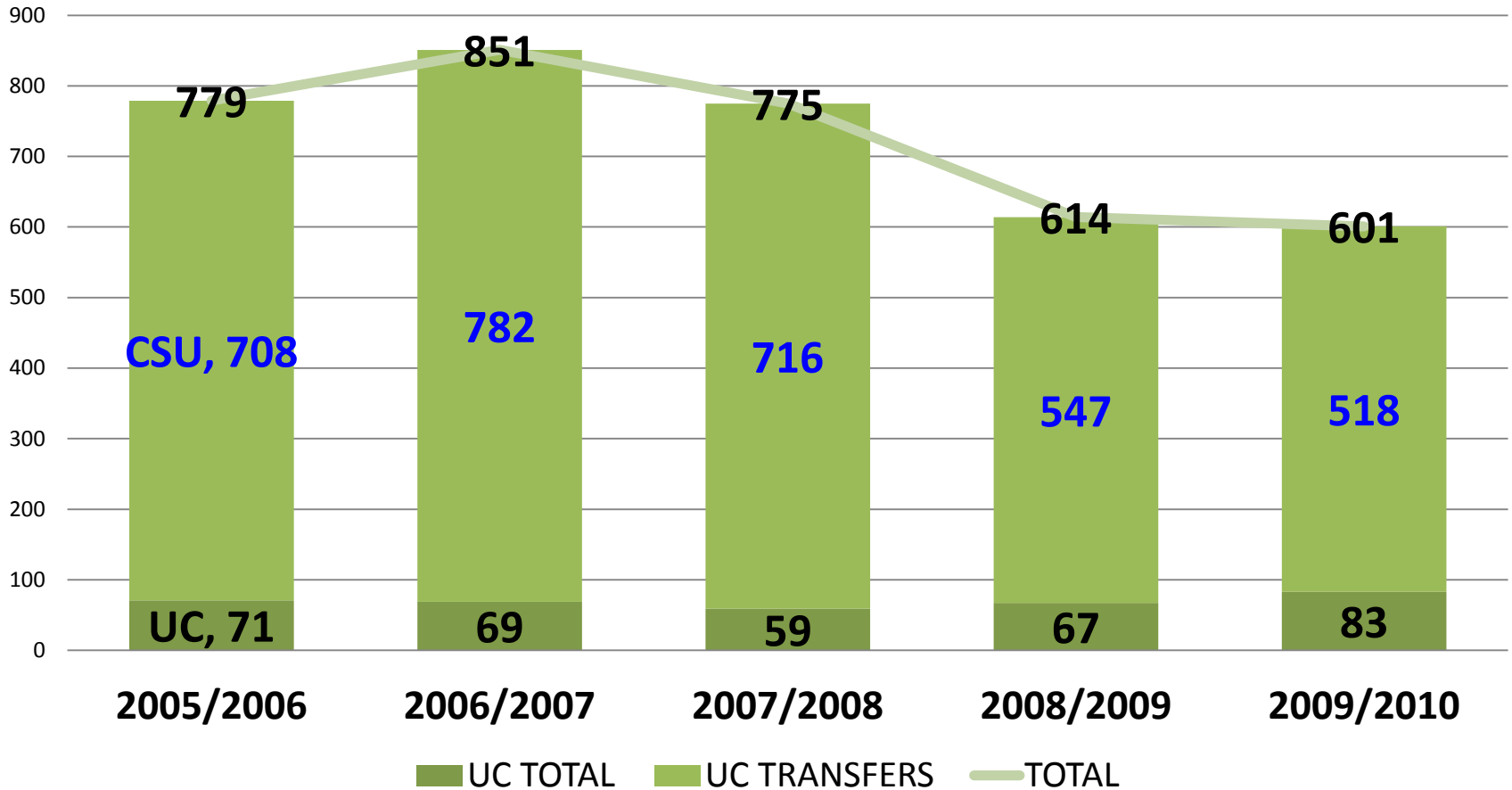
Disaggregated Student Progress and Achievement - ARCC



Source: Cuesta College ARCC 2012 Raw Data Files

Transfers to CSU and UC

Cuesta College Transfers to the CSU and UC (2005/06 - 2009/10)



General Findings – Student Success

- (1) Course Success rates in Distance Education and the South County are significantly lower than course success rates at the SLO campus
- (2) Basic Skills success rates are significantly below similar colleges
- (3) Improvement from basic skills to degree level are low
- (4) Decreasing degrees as well as transfers

Possible Challenges

- How can we increase success rates in DE, at the South County, and in Basic Skills?
- How can we increase students' ability to progress from basic skills to degree/transfer level?
- How can we increase degree/Cert completion and transfer?

Other Factors

External Factors

- Student Success Taskforce Recommendations
- Little Hoover Commission Report
- American Graduation Initiative
- Reports on Community College Success
- State Budget

Internal Factors

- District Fiscal Challenges
- Accreditation Sanctions

Refer to Handouts