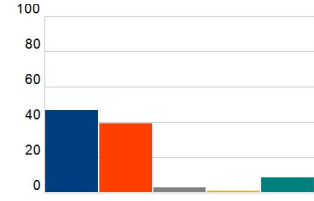


# Cuesta College Campus Climate Survey Results 2019

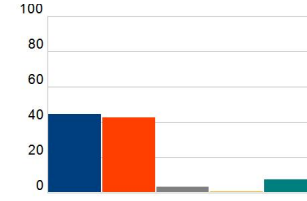
## Q1 non racist



Mean: 3.15

Response	Percent
Strongly Agree	47.13
Agree	39.30
Disagree	3.36
Strongly Disagree	1.40
N/A	8.81

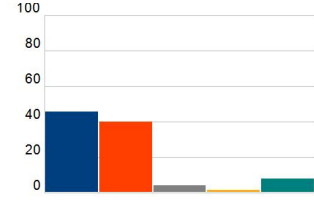
## Q1 non-sexist



Mean: 3.15

Response	Percent
Strongly Agree	44.62
Agree	42.80
Disagree	3.64
Strongly Disagree	1.12
No Opinion	7.83

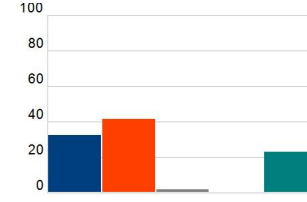
## Q1 not-age biased



Mean: 3.15

Response	Percent
Strongly Agree	46.01
Agree	40.28
Disagree	4.06
Strongly Disagree	1.54
No Opinion	8.11

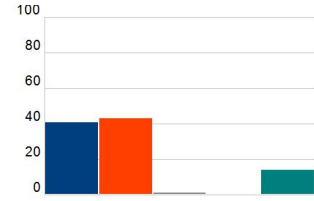
## Q2a



Mean: 2.61

Response	Percent
Strongly Agree	32.73
Agree	41.54
Disagree	2.10
Strongly Disagree	0.42
No Opinion	23.08

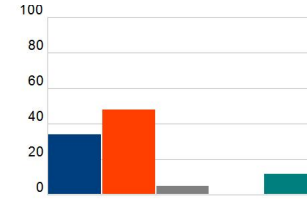
## Q2b



Mean: 2.96

Response	Percent
Strongly Agree	40.84
Agree	43.08
Disagree	1.40
Strongly Disagree	0.28
No Opinion	14.13

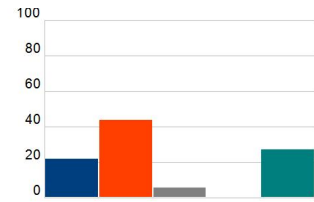
## Q2c



Mean: 2.92

Response	Percent
Strongly Agree	34.13
Agree	48.11
Disagree	5.03
Strongly Disagree	0.56
No Opinion	12.03

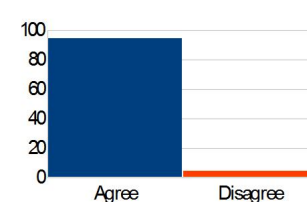
## Q2d



Mean: 2.33

Response	Percent
Strongly Agree	22.10
Agree	44.06
Disagree	5.87
Strongly Disagree	0.70
No Opinion	27.13

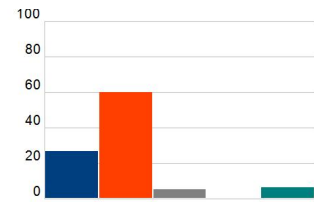
## Q3



Mean: 1.95

Response	Percent
Agree	94.55
Disagree	4.90

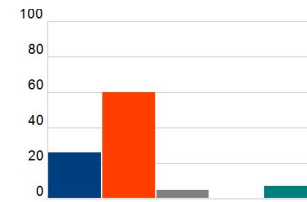
## Q4



Mean: 3.00

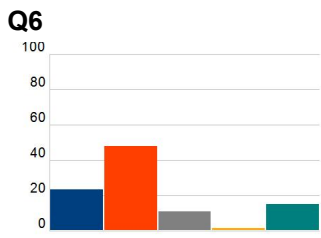
Response	Percent
Strongly Agree	26.85
Agree	60.14
Disagree	5.45
Strongly Disagree	0.42
No Opinion	6.71

## Q5



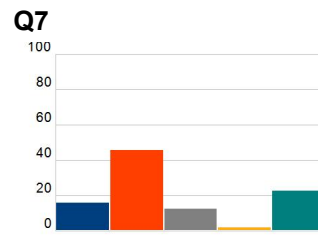
Mean: 2.98

Response	Percent
Strongly Agree	26.29
Agree	60.14
Disagree	5.03
Strongly Disagree	0.84
No Opinion	7.13



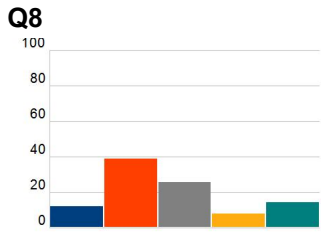
Mean: 2.63

Response	Percent
Strongly Agree	23.36
Agree	48.11
Disagree	11.05
Strongly Disagree	1.54
No Opinion	15.33



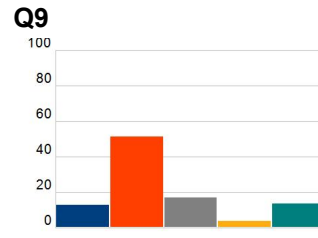
Mean: 2.30

Response	Percent
Strongly Agree	16.08
Agree	45.73
Disagree	12.45
Strongly Disagree	2.24
No Opinion	22.94



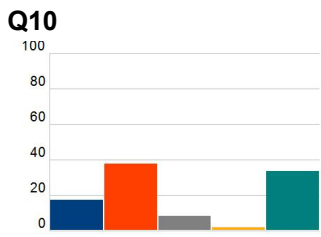
Mean: 2.27

Response	Percent
Strongly Agree	12.17
Agree	39.16
Disagree	25.73
Strongly Disagree	7.97
No Opinion	14.55



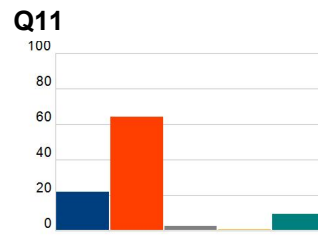
Mean: 2.46

Response	Percent
Strongly Agree	12.87
Agree	51.61
Disagree	17.20
Strongly Disagree	3.78
No Opinion	13.85



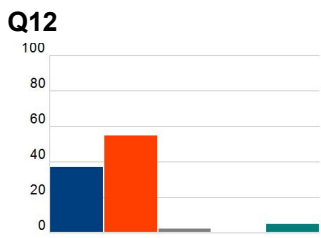
Mean: 2.04

Response	Percent
Strongly Agree	17.48
Agree	37.90
Disagree	8.67
Strongly Disagree	2.10
No Opinion	33.57



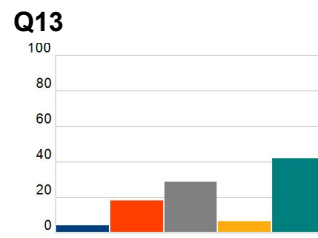
Mean: 2.89

Response	Percent
Strongly Agree	21.96
Agree	64.34
Disagree	2.80
Strongly Disagree	1.12
No Opinion	9.37



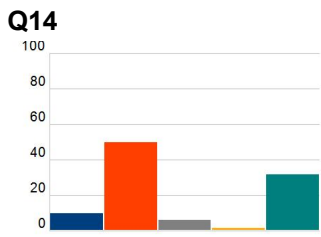
Mean: 3.20

Response	Percent
Strongly Agree	37.20
Agree	54.83
Disagree	2.38
Strongly Disagree	0.14
No Opinion	4.90



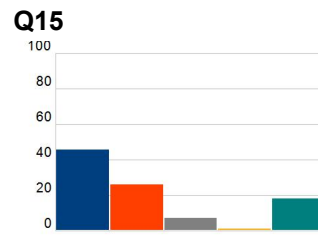
Mean: 1.36

Response	Percent
Strongly Agree	4.20
Agree	18.32
Disagree	28.67
Strongly Disagree	6.43
No Opinion	41.96



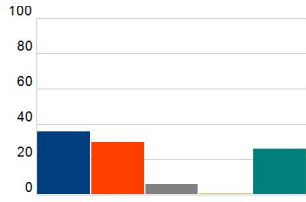
Mean: 2.05

Response	Percent
Strongly Agree	9.93
Agree	50.07
Disagree	6.29
Strongly Disagree	1.54
No Opinion	31.75

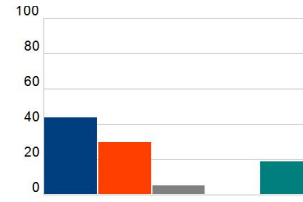


Mean: 2.80

Response	Percent
Very Likely	45.73
Moderately Likely	26.29
Slightly Likely	7.41
Not At All Likely	1.26
No Opinion	18.46

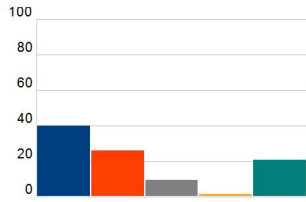
**Q16**

Mean: 2.49

**Q17**

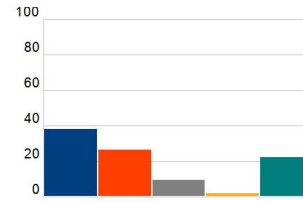
Mean: 2.80

Response	Percent
Very Likely	43.92
Moderately Likely	29.93
Slightly Likely	5.31
Not At All Likely	0.84
No Opinion	19.02

**Q18**

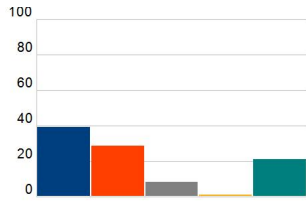
Mean: 2.65

Response	Percent
Very Likely	40.28
Moderately Likely	26.29
Slightly Likely	9.51
Not At All Likely	1.54
No Opinion	20.84

**Q19**

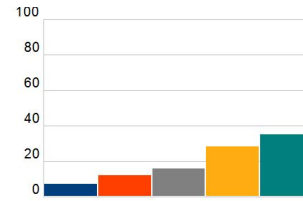
Mean: 2.57

Response	Percent
Very Likely	38.46
Moderately Likely	26.57
Slightly Likely	9.65
Not At All Likely	2.24
No Opinion	22.24

**Q20**

Mean: 2.65

Response	Percent
Very Likely	39.44
Moderately Likely	28.95
Slightly Likely	8.39
Not At All Likely	1.26
No Opinion	21.12

**Q21**

Mean: 1.27

Response	Percent
Very Likely	7.13
Moderately Likely	12.31
Slightly Likely	16.08
Not At All Likely	28.53
No Opinion	35.10