

Figure 2: Participatory Governance Committee Relationships and Workflow

The diagram below shows the relationships and workflow between participatory governance committees. The structure directs content committee work to a central committee in order to inform and facilitate action and reflective dialogue. In support of the district’s mission and strategic plan, content committee initiatives, mid-year and end-of-year progress reports, and results and analysis of annual assessments are sent to the appropriate central committee for review and feedback.

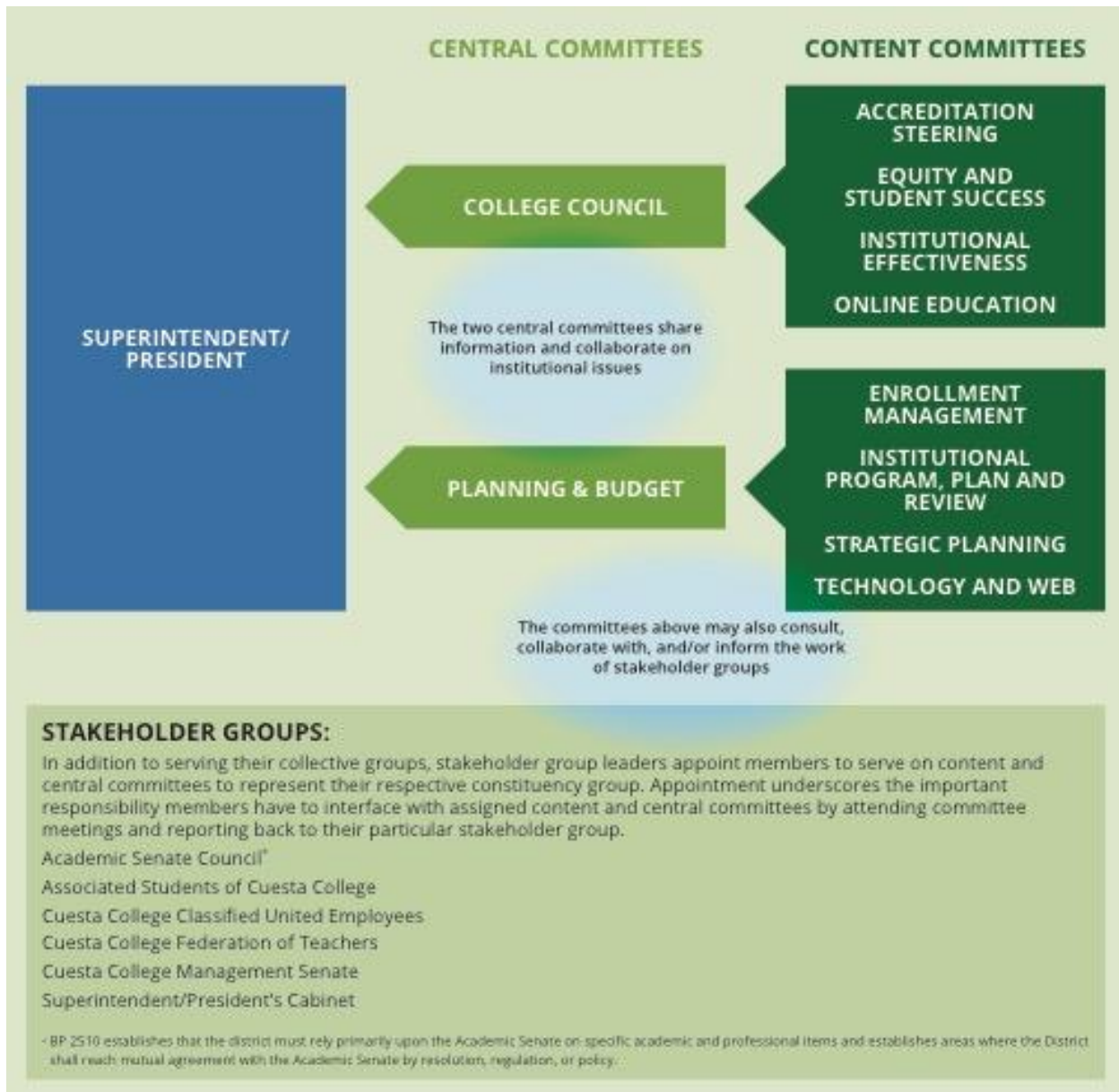


Figure 3: SLOCCCD Decision-Making Process

“Institutional leaders create and encourage innovation leading to institutional excellence. They support administrators, faculty, staff, and students, no matter what their official titles, in taking initiative for improving the practices, programs, and services in which they are involved. When ideas for improvement have policy or significant institution-wide implications, systematic participative processes are used to assure effective planning and implementation”. (ACCJC Standard IV.A.1)

The SLOCCCD decision-making process is connected to the integrated planning processes, which link to one another in a cycle of evaluation, development of goals and objectives, resource allocation, plan implementation, and reevaluation. It is through the regular sequence of these planning practices that the district assesses institutional effectiveness and uses those assessments to continually improve the district’s services to students.

